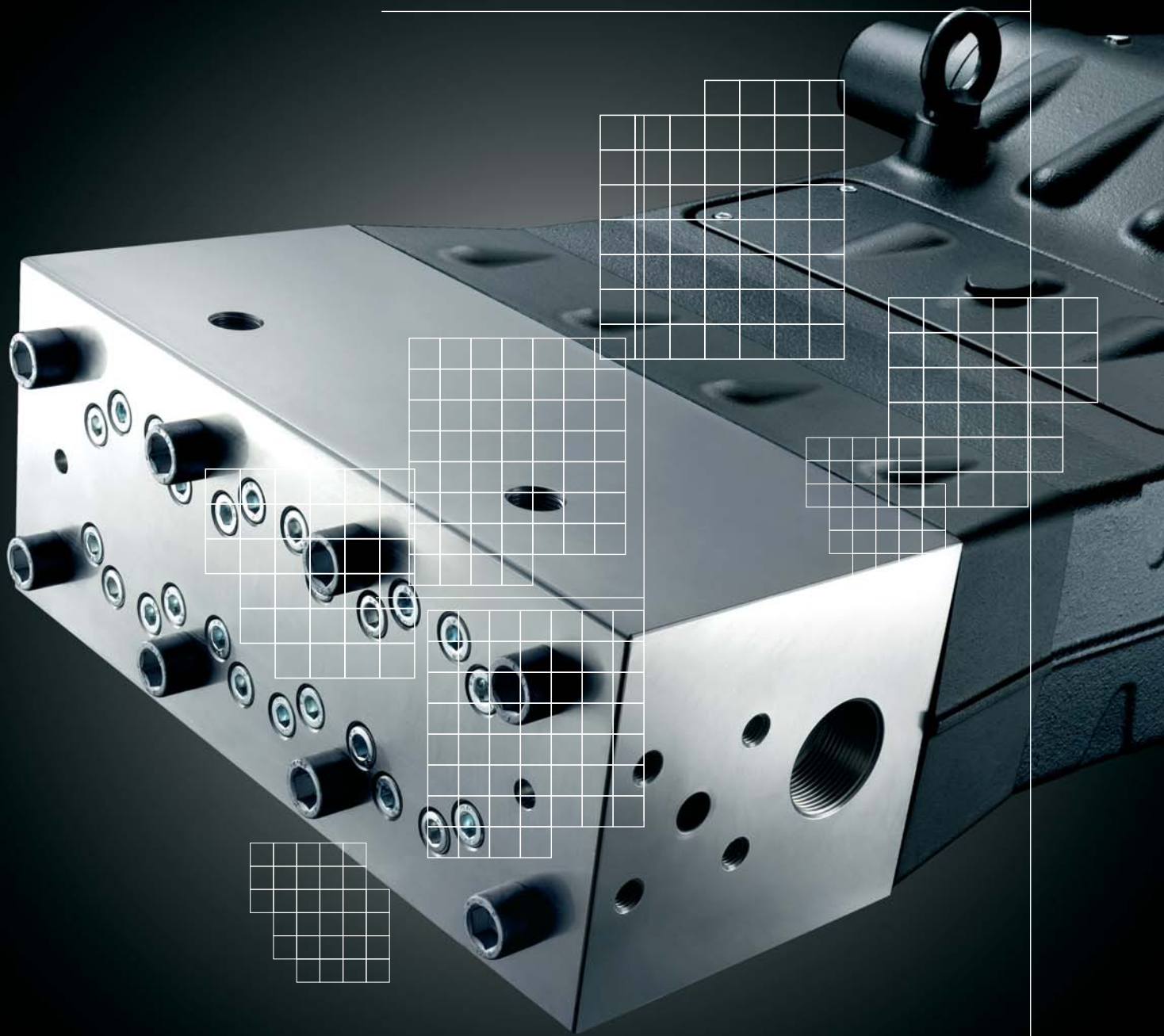
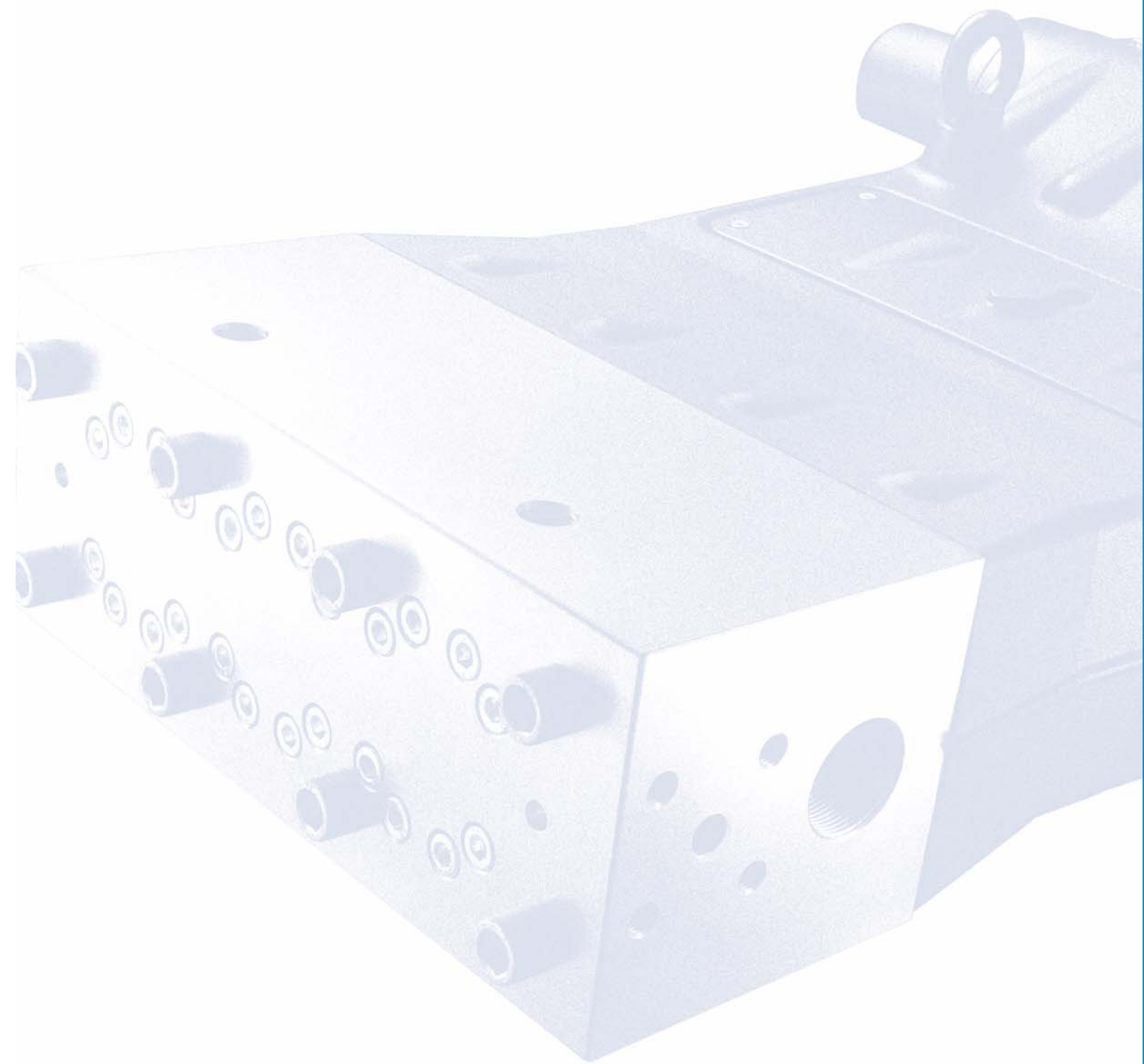
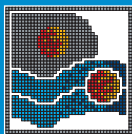


Pratissoli

Pompe e Accessori *Pumps and Accessories*







Pratissoli

In ogni industria esiste un potenziale compito per una pompa a pistoni. Le applicazioni sono innumerevoli e spaziano dalla petrolchimica alla siderurgia, dall'edilizia al trattamento acque, dalla manutenzione industriale al settore ecologia. Pratissoli Pompe si confronta con questa difficile ma affascinante realtà fin dal 1947 e si colloca oggi, a pieno titolo e con orgoglio, tra i maggiori costruttori mondiali di pompe a pistoni.

In any industry there is a potential task for high pressure water plunger pumps.

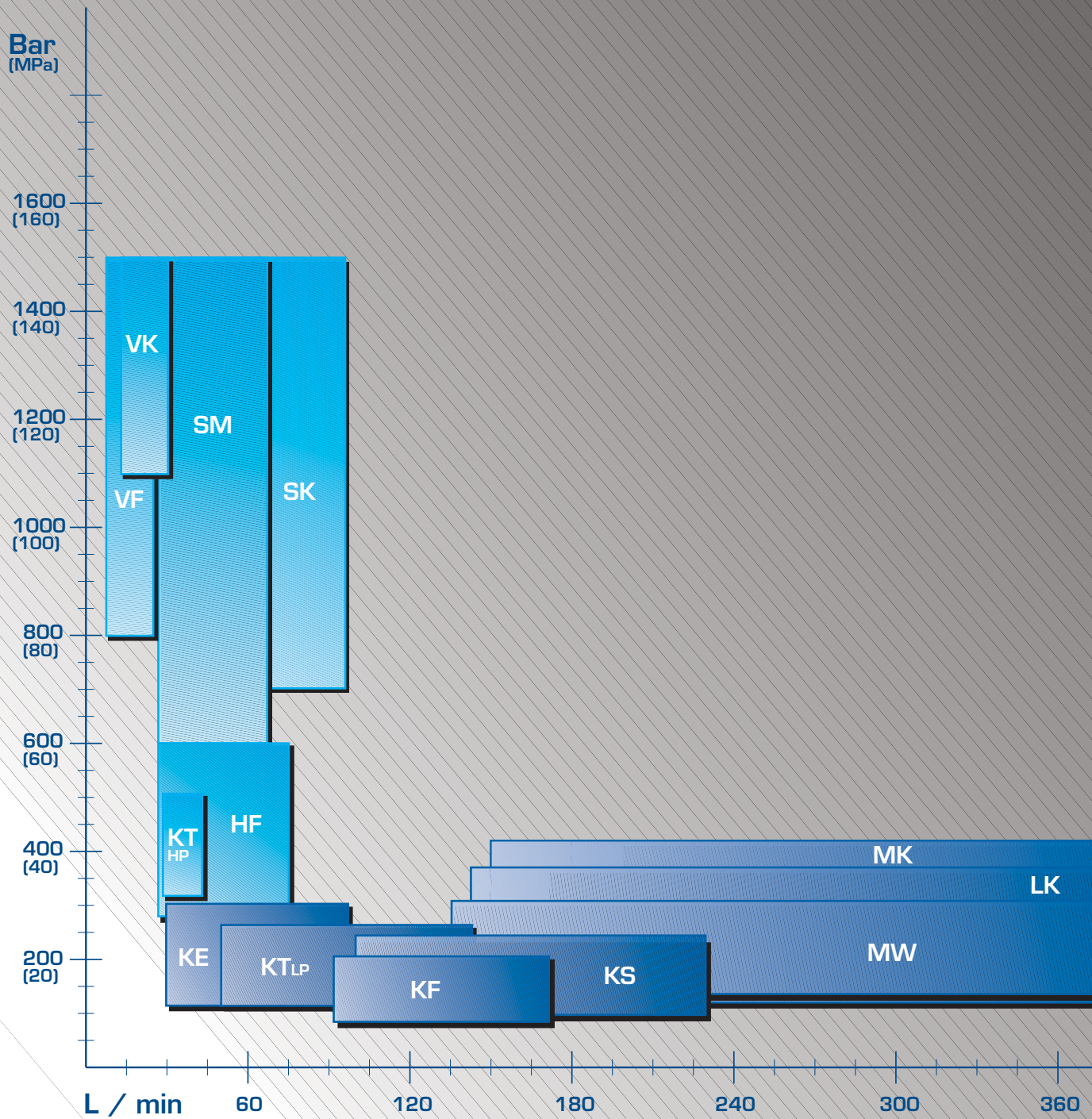
Applications are a multitude and range from petrochemical to the siderurgy, from the building industry to the water treatment, from the industrial maintenance to the environment protection.

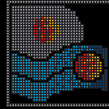
Pratissoli Pompe has been dealing with this hard but fascinating reality since 1947, proud today to be recognized among the worldwide leaders in high pressure water pump technology.



**INTERPUMP
GROUP**

Guida alla scelta delle pompe - *Pumps selection guide*





Gamma potenze Power chart

HP	KW	Pump Series
25	18,5	KE
35	25,8	KT _{LP}
35	25,8	KT _{HP}
50	37,5	KF
50	37,5	HF
50	37,5	VF
75	55	KS
75	55	VK
100	75	MW
100	75	SM
150	110	MK
180	132	MKS
180	132	LK
180	132	SK

MKS

420

480

KE	pag. 4 - 5	34 - 35
KT_{LP}	pag. 6 - 7	36 - 37
KF	pag. 8 - 9	38 - 39
KS	pag. 10 - 11	40 - 41
MW	pag. 12 - 13	42 - 43
MK	pag. 14 - 15	44
MKS	pag. 16 - 17	44
LK	pag. 18 - 19	45
KT_{HP}	pag. 20 - 21	46 - 47
HF	pag. 22 - 23	48 - 49
VF	pag. 24 - 25	50 - 51
VK	pag. 26 - 27	52 - 53
SM	pag. 28 - 29	54 - 55
SK	pag. 30 - 31	56



KE series

25HP



COSTRUZIONE

- Pompa a 3 pistoni tuffanti orizzontali, disponibile in 6 versioni.
- Carter simmetrico dotato di fissaggi inferiori e superiori per sporgenza albero a destra o sinistra.
- Sistema di tenute con camera di ricircolo e lubrificazione in bassa pressione.
- Valvole aspirazione mandata a contatto sferico.
- Lubrificazione a sbattimento.
- **Versioni disponibili su richiesta con sistema di flussaggio tenute.**

CONSTRUCTION

- *Triplex plunger pump, available in 6 versions.*
- *Patent pending, symmetrical power end design featuring top and bottom mounting holes allowing for easy left to right shaft conversion.*
- *Low-high pressure packing design with integrated cooling system.*
- *High volumetric efficiency suction/delivery valves featuring new spherical design of sealing areas.*
- *Splash lubrication.*
- *Flushing systems available on request on selected versions.*

Tipo pompa Pump type	Portata Volume		Pressione Pressure			g/ min r.p.m.	Potenza Power		Peso Weight kg	Dimensioni Dimensions mm
	l/min	US Gpm	bar	MPa	p.s.i.		hp	kW		
KE 20	30	8.0	300	30	4350	1450	25	18,4	36	387x341x196
KE 22	37	10.0	250	25	3650	1450	25	18,4	36	387x341x196
KE 24	45	11.9	210	21	3045	1450	25	18,4	36	387x341x196
KE 28 H	61	16.1	150	15	2170	1450	25	18,4	36	387x341x196
KE 30 H	70	18.5	130	13	1880	1450	25	18,4	36	387x341x196
KE 36 H	100	26.4	100	10	1450	1450	25	18,4	36	387x341x196

Portate tecniche con rendimento volumetrico 100% / Volumes are theoretical at 100% volumetric efficiency

OPZIONI TRASMISSIONI DRIVE OPTIONS

Flangia supporto per azionamenti diretti
Flange for direct drive mount



Kit campana e giunto per accoppiamento a motori idraulici SAE J 744 tipo B-B
Bell housing and coupling for SAE J 744 B-B hydraulic motor



Predisposizione presa di forza ausiliaria opposta albero moto
Auxiliary P.T.O. opposite to shaft side



VERSIONI A RICHIESTA - SPECIALIZED PUMPS



70.SS version

Versioni inox AISI 316 L
Portate: standard
Pressione max: fino a 200 bar
(SS7030 - SS7037 - SS7045)
Temp. max: 85 °C

*AISI 316 L version
Flow rate: standard
Pressure:
max up to 200 bar
(2900 psi)
(SS7030 - SS7037 -
SS7045)
Water temp: max 85°C*



70.SN version

Versioni inox AISI 420
Portate: standard
Pressione max: fino a 300 bar
(SN7030)
Temp. max: 85 °C

*AISI 420 version
Flow rate: standard
Pressure:
max up to 300 bar
(4350 psi)
(SN7030)
Water temp: max 85°C*

KEM 36

Per fanghi e liquidi densi
For light muds and dense liquids



**FILTRI
FILTERS**

■ F10



10 bar
1 MPa
145 psi
100 l/min
26.4 gpm

Alluminio
Aluminium

200/310 microns

**VALVOLE DI MASSIMA PRESSIONE
MAX PRESSURE SETTING VALVES**

■ S723



Ottone
Brass

700 bar
70 MPa
10150 psi
230 l/min
60.8 gpm

■ SX2



720 bar
72 MPa
10442 psi
190 l/min
50 gpm

Acciaio inox
Stainless steel

**REGOLATORI DI PRESSIONE
REGULATING VALVES**

■ R1



R1/200 - R1X/200
200 bar
20 MPa
2900 psi
110 l/min
29 gpm

Ottone
Brass

R1/400 - R1X/400
400 bar
40 MPa
5800 psi
110 l/min
29 gpm

■ R1X



Acciaio inox
Stainless steel

R1/600 - R1X/600
600 bar
60 MPa
8700 psi
70 l/min
18.5 gpm

**VALVOLE AUTOMATICHE
UNLOADER VALVES**

■ H560



500 bar
50 MPa
7250 psi
60 l/min
15.8 gpm

■ BKX600



600 bar
60 MPa
8700 psi
60 l/min
15.8 gpm

**VALVOLE PNEUMATICHE
PNEUMATICALLY OPERATED VALVES**

■ PN2



Acciaio inox
Stainless steel

PN2/140

140 bar
14 MPa
2030 psi
230 l/min
61 gpm

PN2/250

250 bar
25 MPa
3626 psi
230 l/min
61 gpm

PN2/500

500 bar
50 MPa
7250 psi
230 l/min
61 gpm

**LANCE COMPLETE
SPRAY GUNS**

■ P560

Lunghezza 750/1000mm
Lenght 750/1000mm



600 bar - 60 MPa - 8700 psi
60 l/min - 15.8 gpm

■ P560/S

Lunghezza 750/1000mm
Lenght 750/1000mm



600 bar - 60 MPa - 8700 psi
60 l/min - 15.8 gpm

UGELLI / NOZZLES

■ N1



Acciaio inox
Stainless steel

Max. 300 bar
Max. 30 MPa
Max. 4350 psi

**ACCUMULATORI ANTIPULSAZIONI
PULSATION DAMPENERS**

■ A4X

Volume 0,35 l
Volume 0,35 l

Acciaio inox
Stainless steel



Max. 210 bar
Max. 21 MPa
Max. 3045 psi

**MANOMETRI
PRESSURE GAUGES**

■ PG1 ■ PG2



0-120 bar 0-12 MPa
0-160 bar 0-16 MPa
0-250 bar 0-25 MPa
0-400 bar 0-40 MPa
0-600 bar 0-60 MPa
0-1000 bar 0-100 MPa

Attacco Gas 1/4"
Connection Gas 1/4"

**VALVOLE NON RITORNO
CHECK VALVES**

■ UD1



**UD1/5
UD1/02**
250 bar
25 MPa
3650 psi
180 l/min
48 gpm

Prearica / Load
5 bar - 0,5 MPa - 72 psi
0,2 bar - 0,02 MPa - 3 psi

**SLITTE TENDICINGHIE
SLIDES**

■ TC-G



Per installazioni fino a 50 hp/37 kW
For installation up to 50 hp/37 kW

KT series

35HP



COSTRUZIONE

- Pompa per acqua a 3 pistoni tuffanti orizzontali, disponibile in 6 versioni.
- Carter simmetrico dotato di fissaggi inferiori e superiori per sporgenza albero a destra o sinistra.
- Sistema di tenute con camera di ricircolo e lubrificazione in bassa pressione.
- Valvole aspirazione mandata a disposizione ortogonale.
- Lubrificazione a sbattimento.
- **Versioni disponibili su richiesta con sistema di flussaggio tenute.**

CONSTRUCTION

- *Triplex plunger pump, available in 6 versions.*
- *Patent pending, symmetrical power end design featuring top and bottom mounting holes allowing for easy left to right shaft conversion.*
- *Pressure packing design with integrated cooling system.*
- *Orthogonally fitted valves.*
- *Splash lubrication.*
- *Flushing systems available on request on selected versions.*

Tipo pompa Pump type	Portata Volume		Pressione Pressure			g/min r.p.m.	Potenza Power		Peso Weight kg	Dimensioni Dimensions mm
	l/min	US Gpm	bar	MPa	p.s.i.		hp	kW		
KT 24	51	13.5	250	25	3625	1450	33	24,3	40	405x340,5x193
	62	16.3	200	20	2900	1750	32	23,6	40	
KT 28	70	18.4	200	20	2900	1450	36	26,6	40	405x340,5x193
	84	22.2	175	17,5	2538	1750	38	28,0	40	
KT 30	80	21.1	175	17,5	2538	1450	36	26,6	40	405x340,5x193
	96	25.5	140	14	2030	1750	35	26,0	40	
KT 32	91	24.0	150	15	2175	1450	35	26,0	40	405x340,5x193
KT 36	115	30.4	120	12	1740	1450	36	26,6	40	405x340,5x193
	139	36.7	100	10	1450	1750	36	26,6	40	
KT 40	142	37.5	100	10	1450	1450	37	27,1	40	405x340,5x193

Portate tecniche con rendimento volumetrico 100% / Volumes are theoretical at 100% volumetric efficiency

OPZIONI TRASMISSIONI - DRIVE OPTIONS

Flangia supporto per azionamenti diretti
Flange for direct drive mount



Kit campana e giunto per accoppiamento a motori idraulici SAE J 744 tipo B-B
Bell housing and coupling for SAE J 744 B-B hydraulic motor



Predisposizione presa di forza ausiliaria opposta albero moto
Auxiliary P.T.O. opposite to shaft side





**FILTRI
FILTERS**

■ **F10**

Alluminio
Aluminium

200/310 microns



10 bar
1 MPa
145 psi
100 l/min
26.4 gpm

■ **F30**

Polipropilene
Polypropilene

170/365 microns



8 bar
0,8 MPa
120 psi
230 l/min
61 gpm

**VALVOLE DI MASSIMA PRESSIONE
MAX PRESSURE SETTING VALVES**

■ **S723**

Ottone
Brass



700 bar
70 MPa
10150 psi
230 l/min
60.8 gpm

■ **SX2**

Acciaio inox
Stainless steel



720 bar
72 MPa
10442 psi
190 l/min
50 gpm

**REGOLATORI DI PRESSIONE
REGULATING VALVES**

■ **R1**

Ottone
Brass



R1/200 - R1X/200
200 bar
20 MPa
2900 psi
110 l/min
29 gpm

R1/400 - R1X/400
400 bar
40 MPa
5800 psi
110 l/min
29 gpm

■ **R1X**

Acciaio inox
Stainless steel



R1/600 - R1X/600
600 bar
60 MPa
8700 psi
70 l/min
18.5 gpm

**VALVOLE AUTOMATICHE
UNLOADER VALVES**

■ **RA2**

210 bar
21 MPa
3045 psi
230 l/min
61 gpm

Ottone
Brass



■ **BH210**



■ **RA2L**

210 bar
21 MPa
3045 psi
230 l/min
61 gpm

Ottone / Con
leva di bypass
Brass / With
bypass level



210 bar
21 MPa
3045 psi
10-110 l/min
2.6-29 gpm

Max.
Temperature
85 °C (185°F)

**VALVOLE PNEUMATICHE
PNEUMATICALLY OPERATED VALVES**

■ **PN2**

Acciaio inox
Stainless steel



■ **PN2/140**

140 bar
14 MPa
2030 psi
230 l/min
61 gpm

■ **PN2/250**

250 bar
25 MPa
3626 psi
230 l/min
61 gpm

■ **PN2/500**

500 bar
50 MPa
7250 psi
230 l/min
61 gpm

**LANCE COMPLETE
SPRAY GUNS**

■ **P560**

Lunghezza 750/1000mm
Lenght 750/1000mm



600 bar - 60 MPa - 8700 psi
60 l/min - 15.8 gpm

■ **P560/S**

Lunghezza 750/1000mm
Lenght 750/1000mm



600 bar - 60 MPa - 8700 psi
60 l/min - 15.8 gpm

UGELLI / NOZZLES

■ **N1**

Acciaio inox
Stainless steel



Max. 300 bar
Max. 30 MPa
Max. 4350 psi

**ACCUMULATORI ANTIPULSAZIONI
PULSATION DAMPENERS**

■ **A4X**

Volume 0,35 l
Volume 0,35 l

Acciaio inox
Stainless steel



Max. 210 bar
Max. 21 MPa
Max. 3045 psi

**MANOMETRI
PRESSURE GAUGES**

■ **PG1** ■ **PG2**



0-120 bar 0-12 MPa
0-160 bar 0-16 MPa
0-250 bar 0-25 MPa
0-400 bar 0-40 MPa
0-600 bar 0-60 MPa
0-1000 bar 0-100 MPa

Attacco Gas 1/4"
Connection Gas 1/4"

**VALVOLE NON RITORNO
CHECK VALVES**

■ **UD1**

Precarica / Load
5 bar - 0,5 MPa - 72 psi
0,2 bar - 0,02 MPa - 3 psi



UD1/5
UD1/02
250 bar
25 MPa
3650 psi
180 l/min
48 gpm

**SLITTE TENDICINGHIE
SLIDES**

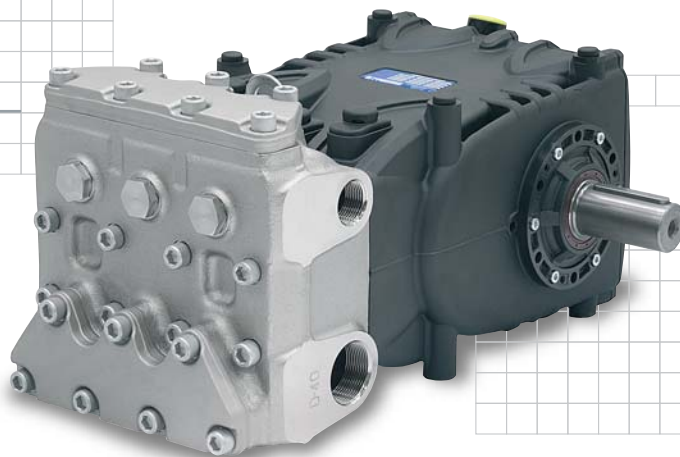
■ **TC-G**



Per installazioni fino a 50 hp/37 kW
For installation up to 50 hp/37 kW

KF series

50HP



COSTRUZIONE

- Pompa a 3 pistoni tuffanti orizzontali, disponibile in 5 versioni.
- Carter simmetrico dotato di fissaggi inferiori e superiori per sporgenza albero a destra o sinistra.
- Sistema di tenute con camera di ricircolo e lubrificazione in bassa pressione.
- Valvole aspirazione mandata a contatto sferico.
- Lubrificazione a sbattimento.
- **Versioni disponibili su richiesta con sistema di flussaggio tenute.**

CONSTRUCTION

- Triplex plunger pump, available in 5 versions.
- Patent pending, symmetrical power end design featuring top and bottom mounting holes allowing for easy left to right shaft conversion.
- Low-high pressure packing design with integrated cooling system.
- High volumetric efficiency suction/delivery valves featuring new spherical design of sealing areas.
- Splash lubrication.
- **Flushing systems available on request on selected versions.**

Tipo pompa Pump type	Portata Volume		Pressione Pressure			g/min r.p.m.	Potenza Power		Peso Weight kg	Dimensioni Dimensions mm
	l/min	US Gpm	bar	MPa	p.s.i.		hp	kW		
KF 28	93	24.5	210	21	3045	1000	50	37,0	69	526x367x253
KF 30	106	28.0	200	20	2900	1000	55	40,0	69	526x367x253
KF 32	120	31.7	180	18	2610	1000	56	41,2	69	526x367x253
KF 36	122	32.2	160	16	2300	800	50	37,0	69	526x367x253
	137	36.2	140	14	2050	900	50	37,0		
	153	40.0	130	13	1900	1000	52	38,2		
KF 40	170	45.0	110	11	1600	900	49	36,0	69	526x367x253

Portate tecniche con rendimento volumetrico 100% / Volumes are theoretical at 100% volumetric efficiency

OPZIONI TRASMISSIONI DRIVE OPTIONS



Flangia supporto per azionamenti diretti
Flange for direct drive mount



Kit campana e giunto per accoppiamento a motori idraulici SAE J 744 tipo C
Bell housing and coupling for SAE J 744 C hydraulic motor



Riduttore
Gearbox



Predisposizione presa di forza ausiliaria opposta albero moto
Auxiliary P.T.O. opposite to shaft side

VERSIONI A RICHIESTA SPECIALIZED PUMPS



71.SS version

Versioni inox AISI 316 L
Portate: standard
Pressione max:
fino a 200 bar
(SS7193 - SS71106)
Temp. max: 85 °C

AISI 316 L versions
Flow rate: standard
Pressure:
max up to 200 bar (2900
psi)(SS7193 - SS71106)
Water temp: max 85°C

71.SN version

Versioni inox AISI 420
Portate e pressioni
standard
Temp. max: 85 °C

AISI 420 versions
Standard volume and
pressure ratings
Water temp: max 85°C



KF50M

Per fanghi e liquidi dens
109 l/min. - 370 r.p.m.
90 bar - 25,5 hp

For light muds and
dense liquids
109 l/min. - 370 r.p.m.
90 bar - 25,5hp



**FILTRI
FILTERS**

■ **F30**
Polipropilene
Polypropilene

170/365
microns



8 bar
0,8 MPa
120 psi
230 l/min
61 gpm

**VALVOLE AUTOMATICHE
UNLOADER VALVES**

■ **RA2**

Ottone
Brass



210 bar
21 MPa
3045 psi
230 l/min
61 gpm

■ **RA2L**

Ottone / Con
leva di bypass
Brass / With
bypass level



210 bar
21 MPa
3045 psi
230 l/min
61 gpm

**REGOLATORI DI PRESSIONE
REGULATING VALVES**

■ **R2**

Ottone
Brass



210 bar
21 MPa
3045 psi
230 l/min
61 gpm

■ **R2L**

Ottone / Con
leva di bypass
Brass / With
bypass level



210 bar
21 MPa
3045 psi
230 l/min
61 gpm

■ **R1X**

Acciaio
inox
Stainless
steel



R1X/200
200 bar - 20 MPa
2900 psi - 110 l/min
29 gpm

R1X/400
400 bar - 40 MPa
5800 psi - 110 l/min
29 gpm

R1X/600
600 bar - 60 MPa
8700 psi - 70 l/min
15.8 gpm

**VALVOLE DI MASSIMA PRESSIONE
MAX PRESSURE SETTING VALVES**

■ **SX2**



Acciaio inox
Stainless steel

720 bar
72 MPa
10442 psi
190 l/min
50 gpm

■ **S723**



Ottone
Brass

700 bar
70 MPa
10150 psi
230 l/min
60.8 gpm

**VALVOLE PNEUMATICHE
PNEUMATICALLY OPERATED VALVES**

■ **PNR2**



210 bar
21 MPa
3045 psi
230 l/min
61 gpm

Ottone
Brass

■ **PNRA2**



210 bar
21 MPa
3045 psi
230 l/min
61 gpm

Ottone
Brass

■ **PN2**

Acciaio inox
Stainless
steel



■ **PN2/140**

140 bar
14 MPa
2030 psi
230 l/min
61 gpm

■ **PN2/250**

250 bar
25 MPa
3626 psi
230 l/min
61 gpm

■ **PN2/500**

500 bar
50 MPa
7250 psi
230 l/min
61 gpm

**MANOMETRI
PRESSURE GAUGES**

■ **PG1** ■ **PG2**



0-120 bar	0-12 MPa
0-160 bar	0-16 MPa
0-250 bar	0-25 MPa
0-400 bar	0-40 MPa
0-600 bar	0-60 MPa
0-1000 bar	0-100 MPa

Attacco Gas 1/4"
Connection Gas 1/4"

**VALVOLE NON RITORNO
CHECK VALVES**

■ **UD1**

Precarica / Load
5 bar - 0,5 MPa - 72 psi
0,2 bar - 0,02 MPa - 3 psi



UD1/5
UD1/02
250 bar
25 MPa
3650 psi
180 l/min
48 gpm

**ACCUMULATORI ANTIPULSAZIONI
PULSATION DAMPENERS**

■ **A7**

Volume 0,7 l
Volume 0,7 l
Acciaio forgiato
Forged steel



Max. 210 bar
Max. 21 MPa
Max. 3045 psi

■ **A7S**

Volume 0,75 l
Volume 0,75 l
Acciaio forgiato
Forged steel



Max. 350 bar
Max. 35 MPa
Max. 5075 psi

■ **A7X**

Volume 0,7 l
Volume 0,7 l
Acciaio inox
Stainless steel



Max. 150 bar
Max. 15 MPa
Max. 2150 psi

**LANCE COMPLETE
SPRAY GUNS**

■ **P560**

Lunghezza 750/1000mm
Lenght 750/1000mm



600 bar - 60 MPa - 8700 psi
60 l/min - 15.8 gpm

■ **P560/S**

Lunghezza 750/1000mm
Lenght 750/1000mm



600 bar - 60 MPa - 8700 psi
60 l/min - 15.8 gpm

UGELLI / NOZZLES

■ **N1**

Acciaio inox
Stainless
steel



Max. 300 bar
Max. 30 MPa
Max. 4350 psi

**SLITTE TENDICINGHIE
SLIDES**

■ **TC-G**



Per installazioni fino a 50 hp/37 kW
For installation up to 50 hp/37 kW

KS series

75HP



CONSTRUZIONE

- Pompa a 3 pistoni tuffanti orizzontali, disponibile in 4 versioni.
- Carter simmetrico dotato di fissaggi inferiori e superiori per sporgenza albero a destra o sinistra.
- Sistema di tenute con camera di ricircolo e lubrificazione in bassa pressione.
- Valvole aspirazione mandata a contatto sferico.
- Lubrificazione a sbattimento.
- Riduttore di giri laterale disponibile in 4 rapporti riduzione e posizionabile a destra o sinistra della pompa.
- **Versioni disponibili su richiesta con sistema di flussaggio tenute.**

CONSTRUCTION

- *Triplex plunger pump, available in 4 versions.*
- *Patent pending, symmetrical power end design featuring top and bottom mounting holes allowing for easy left to right shaft conversion.*
- *Low-high pressure packing design with integrated cooling system.*
- *High volumetric efficiency suction/delivery valves featuring new spherical design of sealing areas.*
- *Splash lubrication.*
- *External gearbox available in 3 ratios and positionable on left or right side of the pump.*
- *Flushing systems available on request on selected versions.*

Tipo pompa Pump type	Portata Volume		Pressione Pressure			g/min r.p.m.	Potenza Power		Peso Weight kg	Dimensioni Dimensions mm
	l/min	US Gpm	bar	MPa	p.s.i.		hp	kW		
KS 28	110	29.1	250	25	3650	1500/1800/2200	72	52,5	95	582x483x261
KS 32	145	38.3	200	20	2900	1500/1800/2200	75	55,0	95	582x483x261
KS 36	183	48.3	160	16	2350	1500/1800/2200	76	56,0	95	582x483x261
KS 40	226	59.7	140	14	2000	1500/1800/2200	81	59,5	95	582x483x261

Portate tecniche con rendimento volumetrico 100% / Volumes are theoretical at 100% volumetric efficiency

OPZIONI TRASMISSIONI - DRIVE OPTIONS

Flangia supporto per azionamenti diretti
Flange for direct drive mount



Presenza diretta senza riduttore
Direct drive without gearbox

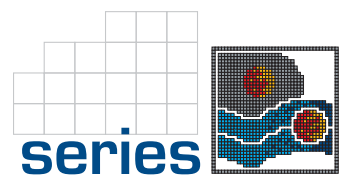


Kit campana e giunto per accoppiamento
a motori idraulici SAE J 744 tipo C
Bell housing and coupling for SAE J 744 C hydraulic motor



Predisposizione presa di forza ausiliaria opposta albero moto
Auxiliary P.T.O. opposite to shaft side





**FILTRI
FILTERS**

■ **F30**

Polipropilene
Polypropilene
170/365
microns



8 bar
0,8 MPa
120 psi
230 l/min
61 gpm

■ **F40**

Polipropilene
Polypropilene
170/365
microns



8 bar
0,8 MPa
120 psi
500 l/min
132 gpm

**VALVOLE DI MASSIMA PRESSIONE
MAX PRESSURE SETTING VALVES**

■ **SV3**

Ottone
Brass
360 bar
36 MPa
5221 psi
500 l/min
132 gpm



■ **S723**

Ottone
Brass
700 bar
70 MPa
10150 psi
230 l/min
60.8 gpm



**REGOLATORI DI PRESSIONE
REGULATING VALVES**

■ **R2**

Ottone
Brass



210 bar
21 MPa
3045 psi
230 l/min
61 gpm

■ **R2L**

Ottone / Con
leva di bypass
Brass / With
bypass level



210 bar
21 MPa
3045 psi
230 l/min
61 gpm

■ **R1**

Ottone
Brass



R1/200
200 bar - 20 MPa
2900 psi - 110 l/min
29 gpm
R1/400
400 bar - 40 MPa
5800 psi - 110 l/min
29 gpm
R1/600
600 bar - 60 MPa
8700 psi - 70 l/min
18.5 gpm

**VALVOLE AUTOMATICHE
UNLOADER VALVES**

■ **RA2**

Ottone
Brass



210 bar
21 MPa
3045 psi
230 l/min
61 gpm

■ **RA2L**

Ottone / Con
leva di bypass
Brass / With
bypass level



210 bar
21 MPa
3045 psi
230 l/min
61 gpm

**VALVOLE PNEUMATICHE
PNEUMATICALLY OPERATED VALVES**

■ **PNR2**

Ottone
Brass
210 bar
21 MPa
3045 psi
230 l/min
61 gpm



■ **PNRA2**

Ottone
Brass
210 bar
21 MPa
3045 psi
230 l/min
61 gpm



■ **PN2**

Acciaio inox
Stainless
steel



■ **PN2/140**

140 bar
14 MPa
2030 psi
230 l/min
61 gpm

■ **PN2/250**

250 bar
25 MPa
3626 psi
230 l/min
61 gpm

■ **PN2/500**

500 bar
50 MPa
7250 psi
230 l/min
61 gpm

**MANOMETRI
PRESSURE GAUGES**

■ **PG1** ■ **PG2**



Attacco Gas 1/4"
Connection Gas 1/4"

0-120 bar 0-12 MPa
0-160 bar 0-16 MPa
0-250 bar 0-25 MPa
0-400 bar 0-40 MPa
0-600 bar 0-60 MPa
0-1000 bar 0-100 MPa

**VALVOLE NON RITORNO
CHECK VALVES**

■ **UD1**

Precarica / Load
5 bar - 0,5 MPa - 72 psi
0,2 bar - 0,02 MPa - 3 psi



UD1/5
UD1/02
250 bar
25 MPa
3650 psi
180 l/min
48 gpm

■ **A7**

Volume 0,7 l
Volume 0,7 l
Acciaio forgiato
Forged steel



Max. 210 bar
Max. 21 MPa
Max. 3045 psi

■ **A7S**

Volume 0,75 l
Volume 0,75 l
Acciaio forgiato
Forged steel



Max. 350 bar
Max. 35 MPa
Max. 5075 psi

■ **A7X**

Volume 0,7 l
Volume 0,7 l
Acciaio inox
Stainless steel



Max. 150 bar
Max. 15 MPa
Max. 2150 psi

**LANCE COMPLETE
SPRAY GUNS**

■ **P560**

Lunghezza 750/1000mm
Lenght 750/1000mm



600 bar - 60 MPa - 8700 psi
60 l/min - 15.8 gpm

■ **P560/S**

Lunghezza 750/1000mm
Lenght 750/1000mm



600 bar - 60 MPa - 8700 psi
60 l/min - 15.8 gpm

UGELLI / NOZZLES

■ **N1**

Acciaio inox
Stainless
steel

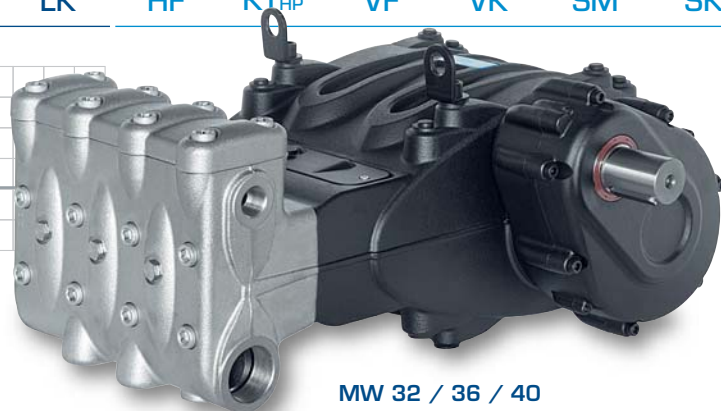


Max. 300 bar
Max. 30 MPa
Max. 4350 psi

MW series 100HP



MW 45 / 50 / 55



MW 32 / 36 / 40

CONSTRUZIONE

- Pompa a 3 pistoni tuffanti orizzontali, disponibile in 6 versioni.
- Sistema di tenute con camera di ricircolo e lubrificazione in bassa pressione.
- Valvole aspirazione mandata a contatto sferico.
- Lubrificazione a sbattimento.
- Riduttore di giri laterale disponibile in 3 rapporti riduzione e posizionabile a destra o sinistra della pompa.
- Kit drenaggio valvole.
- **Versioni disponibili su richiesta con sistema di flussaggio tenute.**

CONSTRUCTION

- *Triplex plunger pump, available in 6 versions.*
- *Low-high pressure packing design with integrated cooling system.*
- *High volumetric efficiency suction/delivery valves featuring new spherical design of sealing areas.*
- *Splash lubrication.*
- *External gear box available in 3 ratios and positionable on left or right side of the pump.*
- *Drain valve kit.*
- ***Flushing systems available on request on selected versions.***

Tipo pompa Pump type	Portata Volume		Pressione Pressure			Con riduttore With gearbox g/min r.p.m.	Potenza Power		Peso Weight kg	Dimensioni Dimensions mm
	l/min	US Gpm	bar	MPa	p.s.i.		hp	kW		
MW 32	135	35.7	300	30	4350	1500 / 1800 / 2200	105	77	260	749,5x358,8x583
MW 36	171	45.2	240	24	3480	1500 / 1800 / 2200	107	79	260	749,5x358,8x583
MW 40	211	55.7	210	21	3045	1500 / 1800 / 2200	115	85	260	749,5x358,8x583
MW 45	267	70.5	155	15,5	2248	1500 / 1800 / 2200	107	79	255	751,5x358,8x583
MW 50	330	87.2	125	12,5	1813	1500 / 1800 / 2200	107	79	255	751,5x358,8x583
MW 55	399	105.4	100	10	1450	1500 / 1800 / 2200	104	76	255	751,5x358,8x583

Portate tecniche con rendimento volumetrico 100% / Volumes are theoretical at 100% volumetric efficiency

OPZIONI TRASMISSIONI DRIVE OPTIONS

Preso moto femmina per accoppiamento diretto motore idraulico SAE J 744 C
SAE J 744 C hollow shaft P.T.O. for hydraulic motor direct mount



Predisposizione presa di forza ausiliaria opposta albero moto
Auxiliary P.T.O. opposite to shaft side



Preso diretta senza riduttore
Direct drive without gearbox



VERSIONI A RICHIESTA - SPECIALIZED PUMPS



MWN version

Versioni inox duplex ASTM F51 e inox 17/4 ph (valvole aspir./mandata)
Portate/Pressioni: standard
Duplex ASTM F51 s.s. versions, block style manifold, 17/4 ph s.s. in/out valves.
Flow rate/Pressure: standard



MW55-M

Per fanghi e liquidi densi
For light muds and dense liquids
Portata: 238 l/min. - Pressione max: 100 bar
Flow rate: 238 l/min. - Max pressure: 100 bar



MW 45-50-55



MW 40

MWR version

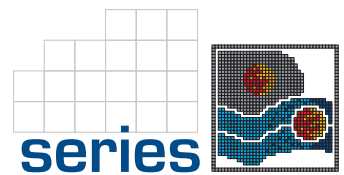
Per l'utilizzo di acque cariche e solidi in sospensione fino al 20% in volume e dimensioni fino a 200 µm
Portate/Pressioni: standard
For charged water with particle size up to 200 µm and 20% concentration in the water.
Flow rate/Pressure: standard
MW32 - MW36: NON DISPONIBILE
MW32 - MW36: NOT AVAILABLE



MW 32-36-40

MWG version

Per l'utilizzo di glicole etilenico / trietilenico (kit ricambio incluso)
Portate/Pressioni: standard
Ethylene glycol / triethylene glycol seals (spare seals kit included)
Flow rate/Pressure: standard



**FILTRI
FILTERS**

■ **F40**

Polipropilene
Polypropilene

170/365
microns



8 bar
0,8 MPa
120 psi
500 l/min
132 gpm

**REGOLATORI DI PRESSIONE
REGULATING VALVES**

■ **RV3**

Ghisa GS600
GS600
Cast iron



300 bar
30 MPa
4350 psi
500 l/min
132 gpm

**MANOMETRI
PRESSURE GAUGES**

■ **PG1** ■ **PG2**



Attacco Gas 1/4"
Connection Gas 1/4"

0-120 bar 0-12 MPa
0-160 bar 0-16 MPa
0-250 bar 0-25 MPa
0-400 bar 0-40 MPa
0-600 bar 0-60 MPa
0-1000 bar 0-100 MPa

**VALVOLE DI MASSIMA PRESSIONE
MAX PRESSURE SETTING VALVES**

■ **SV3**

Ottone
Brass



360 bar
36 MPa
5221 psi
500 l/min
132 gpm

■ **RV3 - 450**

Ghisa GS600
GS600
Cast iron



450 bar
45 MPa
6600 psi
200 l/min
52.9 gpm

**VALVOLE NON RITORNO
CHECK VALVES**

■ **UD1**



Pre carica / Load
5 bar - 0,5 MPa - 72 psi
0,2 bar - 0,02 MPa - 3 psi

UD1/5
UD1/02
250 bar
25 MPa
3650 psi
180 l/min
48 gpm

■ **SX3**

Acciaio inox
Stainless steel



360 bar
36 MPa
5221 psi
500 l/min
132 gpm

■ **RX3**

Acciaio inox
Stainless steel



300 bar
30 MPa
4350 psi
500 l/min
132 gpm

**LANCE COMPLETE
SPRAY GUNS**

■ **P560**

Lunghezza 750/1000mm
Lenght 750/1000mm



600 bar - 60 MPa - 8700 psi
60 l/min - 15.8 gpm

■ **P560/S**

Lunghezza 750/1000mm
Lenght 750/1000mm



600 bar - 60 MPa - 8700 psi
60 l/min - 15.8 gpm

**VALVOLE PNEUMATICHE
PNEUMATICALLY OPERATED VALVES**

■ **PN3**



Ghisa GS600
GS600 Cast iron

PN3/160
160 bar - 16 MPa
2350 psi - 500 l/min
132 gpm
PN3/240
240 bar - 24 MPa
3500 psi - 420 l/min
111 gpm
PN3/300
300 bar - 30 MPa
4350 psi - 300 l/min
79 gpm

**ACCUMULATORI ANTIPULSAZIONI
PULSATION DAMPENERS**

■ **A15**

Volume 1,5 l
Volume 1,5 l
Acciaio forgiato
Forged steel



Max. 330 bar
Max. 33 MPa
Max. 4750 psi

■ **A15X**

Volume 1,5 l
Volume 1,5 l
Acciaio inox
Stainless steel

Max. 150 bar
Max. 15 MPa
Max. 2150 psi

UGELLI / NOZZLES

■ **N1**

Acciaio inox
Stainless steel



Max. 300 bar
Max. 30 MPa
Max. 4350 psi

MK series

150HP



MK 55 / 60 / 65



MK 40 / 45 / 50

COSTRUZIONE

- Pompa a 3 pistoni tuffanti orizzontali, disponibile in 6 versioni.
- Sistema di tenute con camera di ricircolo e lubrificazione in bassa pressione.
- Valvole aspirazione mandata a contatto sferico.
- Lubrificazione a sbattimento.
- Riduttore di giri laterale disponibile in 2 rapporti riduzione e posizionabile a destra o sinistra della pompa.
- Kit drenaggio valvole.
- Versioni disponibili su richiesta con sistema di flussaggio tenute.

CONSTRUCTION

- Triplex plunger pump, available in 6 versions.
- Low-high pressure packing design with integrated cooling system.
- High volumetric efficiency suction/delivery valves featuring new spherical design of sealing areas.
- Splash lubrication.
- External gear box available in 2 ratios and positionable on left or right side of the pump.
- Drain valve kit.
- Flushing systems available on request on selected versions.

Tipo pompa Pump type	Portata Volume		Pressione Pressure			Con riduttore With gearbox g/min r.p.m.	Potenza Power		Peso Weight kg	Dimensioni Dimensions mm
	l/min	US Gpm	bar	MPa	p.s.i.		hp	kW		
MK 40	154	40.5	400	40	5800	1500 / 1800	160	118	393	829x747x362
MK 45	194	51.2	300	30	4350	1500 / 1800	151	111	393	829x747x362
MK 50	240	63.4	250	25	3600	1500 / 1800	156	115	393	829x747x362
MK 55	290	76.7	200	20	2900	1500 / 1800	151	111	407	841x747x400
MK 60	346	91.4	170	17	2500	1500 / 1800	153	112	407	841x747x400
MK 65	406	107.3	150	15	2175	1500 / 1800	158	116	407	841x747x400

Portate tecniche con rendimento volumetrico 100% / Volumes are theoretical at 100% volumetric efficiency

OPZIONI TRASMISSIONI - DRIVE OPTIONS

Versione per azionamento con motore idraulico SAE J 744 tipo D - Solo 1500 g/min.

SAE J 744 - D Type direct coupling / 1500 r.p.m. only



VERSIONI A RICHIESTA - SPECIALIZED PUMPS

MK-R version



Adatta per acque cariche e solidi in sospensione fino al 20% in volume e dimensioni fino a 200 µ.
Portate e pressioni standard.
MK 40 - 45 NON DISPONIBILI.

Suitable for charged water with particles size up to 200 microns and up to 20% concentration in the water.
Standard flows and pressures.
MK 40 - 45 NOT AVAILABLE.



**FILTRI
FILTERS**

■ F40

Polipropilene
Polypropilene

170/365
microns



8 bar
0,8 MPa
120 psi
500 l/min
132 gpm

**VALVOLE DI MASSIMA PRESSIONE
MAX PRESSURE SETTING VALVES**

■ S723

Ottone
Brass



700 bar
70 MPa
10150 psi
230 l/min
60.8 gpm

■ SV3

Ottone
Brass



360 bar
36 MPa
5221 psi
500 l/min
132 gpm

■ SX3

Acciaio inox
Stainless steel



360 bar
36 MPa
5221 psi
500 l/min
132 gpm

**REGOLATORI DI PRESSIONE
REGULATING VALVES**

■ RV3

Ghisa GS600
GS600
Cast iron



300 bar
30 MPa
4350 psi
500 l/min
132 gpm

■ RV3 - 450

Ghisa GS600
GS600
Cast iron



450 bar
45 MPa
6600 psi
200 l/min
52.9 gpm

**VALVOLE PNEUMATICHE
PNEUMATICALLY OPERATED VALVES**

■ PN2

Acciaio inox
Stainless
steel



PN2/140

140 bar
14 MPa
2030 psi
230 l/min
61 gpm

PN2/250

250 bar
25 MPa
3626 psi
230 l/min
61 gpm

PN2/500

500 bar
50 MPa
7250 psi
230 l/min
61 gpm

■ PN3

Ghisa
GS600

GS600
Cast iron



PN3/160

160 bar
16 MPa
2350 psi
500 l/min
132 gpm

PN3/240

240 bar
24 MPa
3500 psi
420 l/min
111 gpm

PN3/300

300 bar
30 MPa
4350 psi
300 l/min
79 gpm

**ACCUMULATORI ANTIPULSAZIONI
PULSATION DAMPENERS**

■ A15

Volume 1,5 l
Volume 1,5 l

Acciaio forgiato
Forged steel



Max. 330 bar
Max. 33 MPa
Max. 4750 psi

■ A15X

Volume 1,5 l
Volume 1,5 l

Acciaio inox
Stainless steel

Max. 150 bar
Max. 15 MPa
Max. 2150 psi

UGELLI / NOZZLES

■ N1

Acciaio inox
Stainless
steel



Max. 300 bar
Max. 30 MPa
Max. 4350 psi

**MANOMETRI
PRESSURE GAUGES**

■ PG1 ■ PG2



0-120 bar 0-12 MPa
0-160 bar 0-16 MPa
0-250 bar 0-25 MPa
0-400 bar 0-40 MPa
0-600 bar 0-60 MPa
0-1000 bar 0-100 MPa

Attacco Gas 1/4"
Connection Gas 1/4"

**LANCE COMPLETE
SPRAY GUNS**

■ P560

Lunghezza 750/1000mm
Lenght 750/1000mm



600 bar - 60 MPa - 8700 psi
60 l/min - 15.8 gpm

■ P560/S

Lunghezza 750/1000mm
Lenght 750/1000mm



600 bar - 60 MPa - 8700 psi
60 l/min - 15.8 gpm

**VALVOLE NON RITORNO
CHECK VALVES**

■ UD1



UD1/5
UD1/02
250 bar
25 MPa
3650 psi
180 l/min
48 gpm

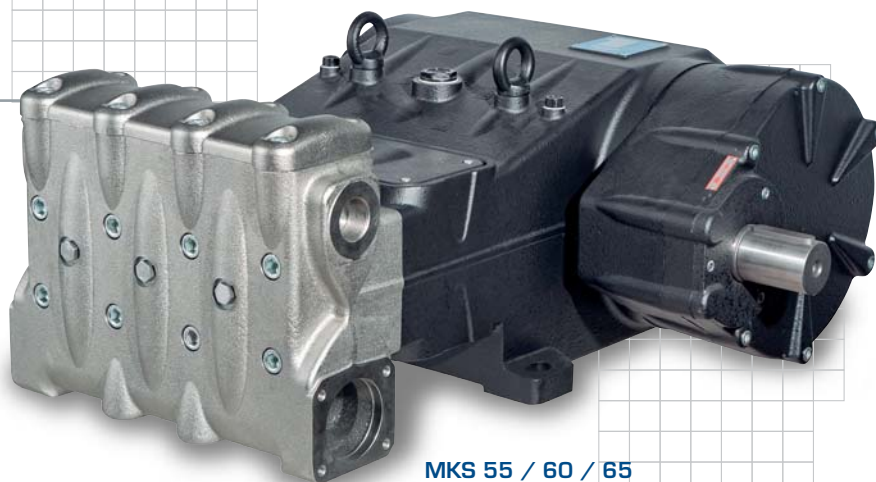
Prearica / Load
5 bar - 0,5 MPa - 72 psi
0,2 bar - 0,02 MPa - 3 psi

MKS series

180HP



MKS 40 / 45 / 50



MKS 55 / 60 / 65

CONSTRUZIONE

- Pompa a 3 pistoni tuffanti orizzontali, disponibile in 6 versioni.
- Sistema di tenute con camera di ricircolo e lubrificazione in bassa pressione.
- Valvole aspirazione mandata a contatto sferico.
- Lubrificazione a sbattimento.
- Riduttore di giri laterale disponibile in 2 rapporti riduzione e posizionabile a destra o sinistra della pompa.
- Kit drenaggio valvole.
- **Versioni disponibili su richiesta con sistema di flussaggio tenute.**

CONSTRUCTION

- *Triplex plunger pump, available in 6 versions.*
- *Low-high pressure packing design with integrated cooling system.*
- *High volumetric efficiency suction/delivery valves featuring new spherical design of sealing areas.*
- *Splash lubrication.*
- *External gear box available in 2 ratios and positionable on left or right side of the pump.*
- *Drain valve kit.*
- ***Flushing systems available on request on selected versions.***

Tipo pompa Pump type	Portata Volume		Pressione Pressure			Con riduttore With gearbox g/min r.p.m.	Potenza Power		Peso Weight kg	Dimensioni Dimensions mm
	l/min	US Gpm	bar	MPa	p.s.i.		hp	kW		
MKS 40	182	48.2	400	40	5800	1500 / 1800 / 2200	191	140,5	393	829x747x362
MKS 45	231	61.0	300	30	4350	1500 / 1800 / 2200	182	134,0	393	829x747x362
MKS 50	285	75.3	250	25	3600	1500 / 1800 / 2200	187	137,5	393	829x747x362
MKS 55	345	91.1	200	20	2900	1500 / 1800 / 2200	180	132,0	407	841x747x400
MKS 60	410	108.4	170	17	2500	1500 / 1800 / 2200	183	135,0	407	841x747x400
MKS 65	481	127.0	150	15	2175	1500 / 1800 / 2200	190	140,0	407	841x747x400

Portate tecniche con rendimento volumetrico 100% / Volumes are theoretical at 100% volumetric efficiency

OPZIONI TRASMISSIONI - DRIVE OPTIONS

Versione per azionamento con motore idraulico SAE J 744 tipo D - Solo 1800 g/min.

SAE J 744 - D Type direct coupling / 1800 r.p.m. only



VERSIONI A RICHIESTA - SPECIALIZED PUMPS

MKS-R version



Adatta per acque cariche e solidi in sospensione fino al 20% in volume e dimensioni fino a 200 µ.
Portate e pressioni standard.
MKS 40 - 45 NON DISPONIBILI.

Suitable for charged water with particles size up to 200 microns and up to 20% concentration in the water.
Standard flows and pressures.
MKS 40 - 45 NOT AVAILABLE.



**FILTRI
FILTERS**

■ F40

Polipropilene
Polypropilene

170/365
microns



8 bar
0,8 MPa
120 psi
500 l/min
132 gpm

**VALVOLE DI MASSIMA PRESSIONE
MAX PRESSURE SETTING VALVES**

■ S723

Ottone
Brass



700 bar
70 MPa
10150 psi
230 l/min
60.8 gpm

■ SV3

Ottone
Brass



360 bar
36 MPa
5221 psi
500 l/min
132 gpm

■ SX3

Acciaio inox
Stainless steel



360 bar
36 MPa
5221 psi
500 l/min
132 gpm

**REGOLATORI DI PRESSIONE
REGULATING VALVES**

■ RV3

Ghisa GS600
GS600
Cast iron



300 bar
30 MPa
4350 psi
500 l/min
132 gpm

■ RV3 - 450

Ghisa GS600
GS600
Cast iron



450 bar
45 MPa
6600 psi
200 l/min
52.9 gpm

**VALVOLE PNEUMATICHE
PNEUMATICALLY OPERATED VALVES**

■ PN2

Acciaio inox
Stainless
steel



■ PN2/140

140 bar
14 MPa
2030 psi
230 l/min
61 gpm

■ PN2/250

250 bar
25 MPa
3626 psi
230 l/min
61 gpm

■ PN2/500

500 bar
50 MPa
7250 psi
230 l/min
61 gpm

■ PN3

Ghisa
GS600

GS600
Cast iron



■ PN3/160

160 bar
16 MPa
2350 psi
500 l/min
132 gpm

■ PN3/240

240 bar
24 MPa
3500 psi
420 l/min
111 gpm

■ PN3/300

300 bar
30 MPa
4350 psi
300 l/min
79 gpm

**ACCUMULATORI ANTIPULSAZIONI
PULSATION DAMPENERS**

■ A15

Volume 1,5 l
Volume 1,5 l

Acciaio forgiato
Forged steel



Max. 330 bar
Max. 33 MPa
Max. 4750 psi

■ A15X

Volume 1,5 l
Volume 1,5 l

Acciaio inox
Stainless steel



Max. 150 bar
Max. 15 MPa
Max. 2150 psi

UGELLI / NOZZLES

■ N1

Acciaio inox
Stainless
steel



Max. 300 bar
Max. 30 MPa
Max. 4350 psi

**MANOMETRI
PRESSURE GAUGES**

■ PG1 ■ PG2



0-120 bar 0-12 MPa
0-160 bar 0-16 MPa
0-250 bar 0-25 MPa
0-400 bar 0-40 MPa
0-600 bar 0-60 MPa
0-1000 bar 0-100 MPa

Attacco Gas 1/4"
Connection Gas 1/4"

**LANCE COMPLETE
SPRAY GUNS**

■ P560

Lunghezza 750/1000mm
Lenght 750/1000mm



600 bar - 60 MPa - 8700 psi
60 l/min - 15.8 gpm

■ P560/S

Lunghezza 750/1000mm
Lenght 750/1000mm



600 bar - 60 MPa - 8700 psi
60 l/min - 15.8 gpm

**VALVOLE NON RITORNO
CHECK VALVES**

■ UD1

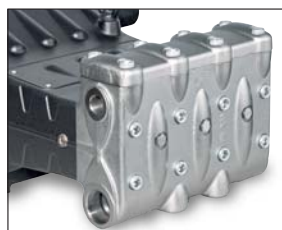


UD1/5
UD1/02
250 bar
25 MPa
3650 psi
180 l/min
48 gpm

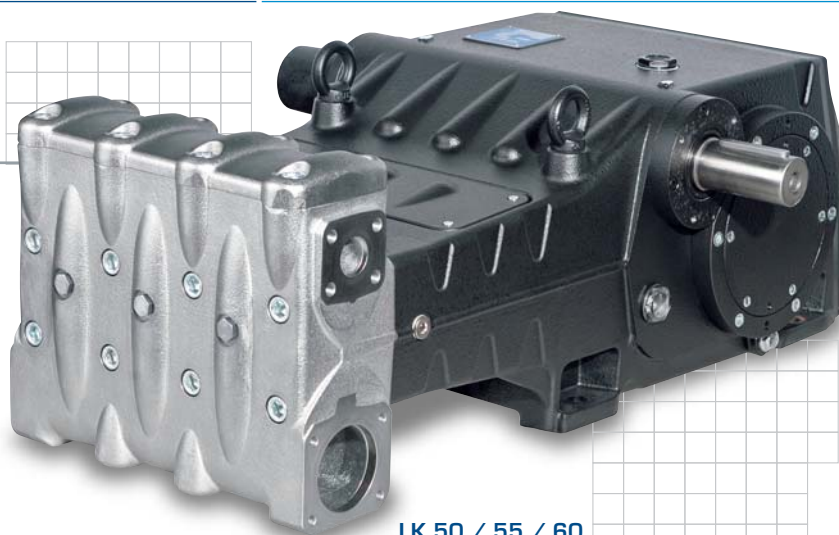
Precarica / Load
5 bar - 0,5 MPa - 72 psi
0,2 bar - 0,02 MPa - 3 psi

LK series

180HP



LK 36 / 40 / 45



LK 50 / 55 / 60

CONSTRUZIONE

- Pompa a 3 pistoni tuffanti orizzontali, disponibile in 6 versioni.
- Sistema di tenute con camera di ricircolo e lubrificazione in bassa pressione.
- Valvole aspirazione mandata a contatto sferico.
- Lubrificazione a sbattimento.
- Riduttore di giri interno disponibile in 3 rapporti di riduzione - Albero presa di moto doppia sporgenza
- Kit drenaggio valvole.
- Versioni disponibili su richiesta con sistema di flussaggio tenute.

CONSTRUCTION

- Triplex plunger pump, available in 6 versions.
- Low-high pressure packing design with integrated cooling system.
- High volumetric efficiency suction/delivery valves featuring new spherical design of sealing areas.
- Splash lubrication.
- Built-in gearbox available in 3 ratios
- Drive shaft double PTO
- Drain valve kit.
- Flushing systems available on request on selected versions.

Tipo pompa Pump type	Portata - Volume Con riduttore - With Gearbox						Pressione Pressure			Potenza Power		Peso Weight	Dimensioni Dimensions
	1500 r.p.m.		1750 r.p.m.		1900 r.p.m.		bar	MPa	p.s.i.	hp	kW		
	l/min	US Gpm	l/min	US Gpm	l/min	US Gpm							
LK 36	140	37.0	152	40.2	154	40.7	400	40	5800	161	118	373	929,5x672x386,5
LK 40	173	45.7	188	49.7	190	50.2	350	35	5075	173	127	373	929,5x672x386,5
LK 45	218	57.6	238	62.9	241	63.7	280	28	4060	176	129	373	929,5x672x386,5
LK 50	269	71.1	294	77.7	297	78.5	230	23	3335	177	130	383	941,5x672x406
LK 55	326	86.1	355	93.8	360	95.1	190	19	2755	178	131	383	941,5x672x406
LK 60	388	102.5	423	111.8	428	113.1	160	16	2320	178	131	383	941,5x672x406

Portate tecniche con rendimento volumetrico 100% / Volumes are theoretical at 100% volumetric efficiency

VERSIONI A RICHIESTA - SPECIALIZED PUMPS

LKN version



Versioni inox DUPLEX ASTM F51
Valvole inox 17/4PH
Portate e pressioni : standard

DUPLEX steel ASTM F51
17/4PH s.s. valves
Standard flow and pressure rating



**FILTRI
FILTERS**

■ F40

Polipropilene
Polypropilene

170/365
microns



8 bar
0,8 MPa
120 psi
500 l/min
132 gpm

**VALVOLE DI MASSIMA PRESSIONE
MAX PRESSURE SETTING VALVES**

■ S723

Ottone
Brass



700 bar
70 MPa
10150 psi
230 l/min
60.8 gpm

■ SV3

Ottone
Brass



360 bar
36 MPa
5221 psi
500 l/min
132 gpm

■ SX3

Acciaio inox
Stainless steel



360 bar
36 MPa
5221 psi
500 l/min
132 gpm

**ACCUMULATORI ANTIPULSAZIONI
PULSATION DAMPENERS**

■ A15

Volume 1,5 l
Volume 1,5 l

Acciaio forgiato
Forged steel



Max. 330 bar
Max. 33 MPa
Max. 4750 psi

■ A15X

Volume 1,5 l
Volume 1,5 l

Acciaio inox
Stainless steel

Max. 150 bar
Max. 15 MPa
Max. 2150 psi

**VALVOLE PNEUMATICHE
PNEUMATICALLY OPERATED VALVES**

■ PN2

Acciaio inox
Stainless
steel



PN2/140

140 bar
14 MPa
2030 psi
230 l/min
61 gpm

PN2/250

250 bar
25 MPa
3626 psi
230 l/min
61 gpm

PN2/500

500 bar
50 MPa
7250 psi
230 l/min
61 gpm

■ PN3

Ghisa
GS600
GS600
Cast iron



PN3/160

160 bar - 16 MPa
2350 psi - 500 l/min
132 gpm

PN3/240

240 bar - 24 MPa
3500 psi - 420 l/min
111 gpm

PN3/300

300 bar - 30 MPa
4350 psi - 300 l/min
79 gpm

**REGOLATORI DI PRESSIONE
REGULATING VALVES**

■ RV3

Ghisa GS600
GS600
Cast iron



300 bar
30 MPa
4350 psi
500 l/min
132 gpm

■ RV3 - 450

Ghisa GS600
GS600
Cast iron



450 bar
45 MPa
6600 psi
200 l/min
52.9 gpm

■ RX3

Acciaio inox
Stainless steel



300 bar
30 MPa
4350 psi
500 l/min
132 gpm

**MANOMETRI
PRESSURE GAUGES**

■ PG1 ■ PG2



0-120 bar 0-12 MPa
0-160 bar 0-16 MPa
0-250 bar 0-25 MPa
0-400 bar 0-40 MPa
0-600 bar 0-60 MPa
0-1000 bar 0-100 MPa

Attacco Gas 1/4"
Connection Gas 1/4"

**VALVOLE NON RITORNO
CHECK VALVES**

■ UD1



UD1/5
UD1/02
250 bar
25 MPa
3650 psi
180 l/min
48 gpm

Precarica / Load
5 bar - 0,5 MPa - 72 psi
0,2 bar - 0,02 MPa - 3 psi

**LANCE COMPLETE
SPRAY GUNS**

■ P560

Lunghezza 750/1000mm
Lenght 750/1000mm



600 bar - 60 MPa - 8700 psi
60 l/min - 15.8 gpm

■ P560/S

Lunghezza 750/1000mm
Lenght 750/1000mm



600 bar - 60 MPa - 8700 psi
60 l/min - 15.8 gpm

UGELLI / NOZZLES

■ N1



Max. 300 bar
Max. 30 MPa
Max. 4350 psi

Acciaio inox
Stainless
steel

KT series

35HP



COSTRUZIONE

- Pompa per acqua a 3 pistoni tuffanti orizzontali, disponibile in 4 versioni.
- Carter simmetrico dotato di fissaggi inferiori e superiori per sporgenza albero a destra o sinistra.
- Sistema di tenute con camera di ricircolo e lubrificazione in bassa pressione.
- Valvole aspirazione mandata a disposizione ortogonale.
- Lubrificazione a sbattimento.
- **Versioni disponibili su richiesta con sistema di flussaggio tenute.**

CONSTRUCTION

- *Triplex plunger pump, available in 4 versions.*
- *Patent pending, symmetrical power end design featuring top and bottom mounting holes allowing for easy left to right shaft conversion.*
- *Pressure packing design with integrated cooling system.*
- *Orthogonally fitted valves.*
- *Splash lubrication.*
- *Flushing systems available on request on selected versions.*

Tipo pompa Pump type	Portata Volume		Pressione Pressure			g/min r.p.m.	Potenza Power		Peso Weight kg	Dimensioni Dimensions mm
	l/min	US Gpm	bar	MPa	p.s.i.		hp	kW		
KT16	27	7.2	500	50	7250	1750	36	26,6	40	395x341x212
	35	9.2	400	40	5800		36	26,6		
KT18	29	7.6	500	50	7250	1450	37	27,5	40	395x341x212
	35	9.2	400	40	5800		36	26,6		
KT20	36	9.4	400	40	5800	1450	37	27,5	40	395x341x212
	43	11.3	320	32	4640		36	26,6		
KT22	43	11.4	320	32	4640	1450	36	26,6	40	395x341x212
	52	13.7	250	25	3625		34	24,8		

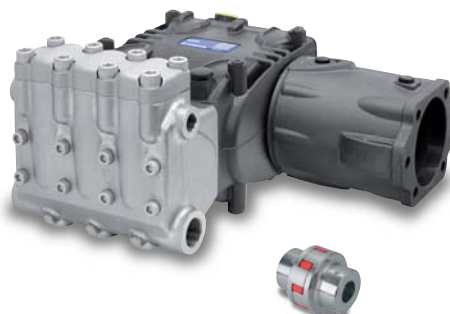
Portate tecniche con rendimento volumetrico 100% / Volumes are theoretical at 100% volumetric efficiency

OPZIONI TRASMISSIONI - DRIVE OPTIONS

Flangia supporto per azionamenti diretti
Flange for direct drive mount

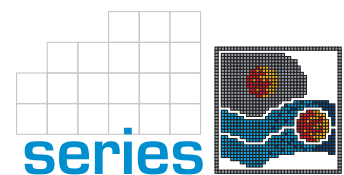


Kit campana e giunto per accoppiamento a motori idraulici SAE J 744 tipo B-B
Bell housing and coupling for SAE J 744 B-B hydraulic motor



Predisposizione presa di forza ausiliaria opposta albero moto
Auxiliary P.T.O. opposite to shaft side





**FILTRI
FILTERS**

■ F10



10 bar
1 MPa
145 psi
100 l/min
26.4 gpm

Alluminio
Aluminium

200/310 microns

**VALVOLE DI MASSIMA PRESSIONE
MAX PRESSURE SETTING VALVES**

■ S723



Ottone
Brass

700 bar
70 MPa
10150 psi
230 l/min
60.8 gpm

■ SX2



720 bar
72 MPa
10442 psi
190 l/min
50 gpm

Acciaio inox
Stainless steel

**REGOLATORI DI PRESSIONE
REGULATING VALVES**

■ R1



R1/200 - R1X/200
200 bar
20 MPa
2900 psi
110 l/min
29 gpm

Ottone
Brass

R1/400 - R1X/400
400 bar
40 MPa
5800 psi
110 l/min
29 gpm

■ R1X



Acciaio inox
Stainless steel

R1/600 - R1X/600
600 bar
60 MPa
8700 psi
70 l/min
18.5 gpm

**VALVOLE AUTOMATICHE
UNLOADER VALVES**

■ H560



500 bar
50 MPa
7250 psi
60 l/min
15.8 gpm

■ BKX600



600 bar
60 MPa
8700 psi
60 l/min
15.8 gpm

**VALVOLE PNEUMATICHE
PNEUMATICALLY OPERATED VALVES**

■ PN2



Acciaio inox
Stainless steel

PN2/140

140 bar
14 MPa
2030 psi
230 l/min
61 gpm

PN2/250

250 bar
25 MPa
3626 psi
230 l/min
61 gpm

PN2/500

500 bar
50 MPa
7250 psi
230 l/min
61 gpm

**LANCE COMPLETE
SPRAY GUNS**

■ P560

Lunghezza 750/1000mm
Lenght 750/1000mm



600 bar - 60 MPa - 8700 psi
60 l/min - 15.8 gpm

■ P560/S

Lunghezza 750/1000mm
Lenght 750/1000mm



600 bar - 60 MPa - 8700 psi
60 l/min - 15.8 gpm

UGELLI / NOZZLES

■ N1



Acciaio inox
Stainless steel

Max. 300 bar
Max. 30 MPa
Max. 4350 psi

**ACCUMULATORI ANTIPULSAZIONI
PULSATION DAMPENERS**

■ A4X

Volume 0,35 l
Volume 0,35 l

Acciaio inox
Stainless steel



Max. 210 bar
Max. 21 MPa
Max. 3045 psi

**MANOMETRI
PRESSURE GAUGES**

■ PG1 ■ PG2



0-120 bar 0-12 MPa
0-160 bar 0-16 MPa
0-250 bar 0-25 MPa
0-400 bar 0-40 MPa
0-600 bar 0-60 MPa
0-1000 bar 0-100 MPa

Attacco Gas 1/4"
Connection Gas 1/4"

**VALVOLE NON RITORNO
CHECK VALVES**

■ UD1

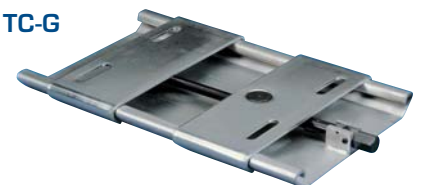


**UD1/5
UD1/02**
250 bar
25 MPa
3650 psi
180 l/min
48 gpm

Pre carica / Load
5 bar - 0,5 MPa - 72 psi
0,2 bar - 0,02 MPa - 3 psi

**SLITTE TENDICINGHIE
SLIDES**

■ TC-G



Per installazioni fino a 50 hp/37 kW
For installation up to 50 hp/37 kW

HF series

50HP



COSTRUZIONE

- Pompa a 3 pistoni tuffanti orizzontali, disponibile in 3 versioni.
- Carter simmetrico dotato di fissaggi inferiori e superiori per sporgenza albero a destra o sinistra.
- Sistema di tenute con camera di ricircolo e lubrificazione in bassa pressione.
- Valvole aspirazione mandata a contatto sferico.
- Lubrificazione a sbattimento.
- **Versioni disponibili con sistema di flussaggio tenute.**

CONSTRUCTION

- *Triples plunger pump, available in 3 versions.*
- *Patent pending, symmetrical power end design featuring top and bottom mounting holes allowing for easy left to right shaft conversion.*
- *Low-high pressure packing design with integrated cooling system.*
- *High volumetric efficiency suction/delivery valves featuring new spherical design of sealing areas.*
- *Splash lubrication.*
- *Flushing systems available on request on selected versions.*

Tipo pompa Pump type	Portata Volume		Pressione Pressure			g/ min r.p.m.	Potenza Power		Peso Weight kg	Dimensioni Dimensions mm
	l/min	US Gpm	bar	MPa	p.s.i.		hp	kW		
HF 18	30	8.1	600	60	8700	800	48	35,5	63	507x367x240
	38	10.1	500	50	7250	1000	50	36,8	63	507x367x240
HF 20	47	12.4	400	40	5800	1000	50	36,8	63	507x367x240
HF 22	57	15.0	350	35	5075	1000	50	36,8	63	507x367x240
HF 25	74	19.4	280	28	4060	1000	53	39,0	63	507x367x240

Portate tecniche con rendimento volumetrico 100% / Volumes are theoretical at 100% volumetric efficiency

OPZIONI TRASMISSIONI - DRIVE OPTIONS



Flangia supporto per azionamenti diretti
Flange for direct drive mount



Kit campana e giunto per accoppiamento a motori idraulici SAE J 744 tipo C
Bell housing and coupling for SAE J 744 C hydraulic motor



Riduttore
Gearbox



Predisposizione presa di forza ausiliaria opposta albero moto
Auxiliary P.T.O. opposite to shaft side

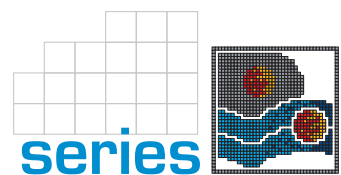
VERSIONI A RICHIESTA SPECIALIZED PUMPS

HFN 25

Versioni inox DUPLEX ASTM F51 - Valvole inox 17/4PH
Portate e pressioni : standard

*DUPLEX steel ASTM F51 - 17/4PH s.s. valves
Standard flow and pressure rating*





**FILTRI
FILTERS**

■ **F10**

Alluminio
Aluminium

200/310
microns



10 bar
1 MPa
145 psi
100 l/min
26.4 gpm

■ **F30**

Polipropilene
Polypropilene

170/365
microns



8 bar
0,8 MPa
120 psi
230 l/min
61 gpm

**VALVOLE DI MASSIMA PRESSIONE
MAX PRESSURE SETTING VALVES**

■ **S723**

Ottone
Brass



700 bar
70 MPa
10150 psi
230 l/min
60.8 gpm

■ **SX2**

Acciaio inox
Stainless steel



720 bar
72 MPa
10442 psi
190 l/min
50 gpm

**VALVOLE AUTOMATICHE
UNLOADER VALVES**

■ **H560**



500 bar
50 MPa
7250 psi
60 l/min
15.8 gpm

■ **BKX600**



600 bar
60 MPa
8700 psi
60 l/min
15.8 gpm

**REGOLATORI DI PRESSIONE
REGULATING VALVES**

■ **R1**

Ottone
Brass



R1/200 - R1X/200
200 bar
20 MPa
2900 psi
110 l/min
29 gpm

■ **R1/400 - R1X/400**

400 bar
40 MPa
5800 psi
110 l/min
29 gpm

■ **R1X**

Acciaio inox
Stainless steel



R1/600 - R1X/600
600 bar
60 MPa
8700 psi
70 l/min
18.5 gpm

**VALVOLE PNEUMATICHE
PNEUMATICALLY OPERATED VALVES**

■ **PN2**

Acciaio inox
Stainless steel



■ **PN2/140**

140 bar
14 MPa
2030 psi
230 l/min
61 gpm

■ **PN2/250**

250 bar
25 MPa
3626 psi
230 l/min
61 gpm

■ **PN2/500**

500 bar
50 MPa
7250 psi
230 l/min
61 gpm

**LANCE COMPLETE
SPRAY GUNS**

■ **P560**

Lunghezza 750/1000mm
Lenght 750/1000mm



600 bar - 60 MPa - 8700 psi
60 l/min - 15.8 gpm

■ **P560/S**

Lunghezza 750/1000mm
Lenght 750/1000mm



600 bar - 60 MPa - 8700 psi
60 l/min - 15.8 gpm

UGELLI / NOZZLES

■ **N1**

Acciaio inox
Stainless steel



Max. 300 bar
Max. 30 MPa
Max. 4350 psi

■ **N3/0**

Max. 1000 bar
Max. 100 MPa
Max. 14500 psi

■ **N3**

Inserto in
zaffiro
Sapphire orifice



■ **N3/30**

Max. 500 bar
Max. 50 MPa
Max. 7250 psi

**MANOMETRI
PRESSURE GAUGES**

■ **PG1** ■ **PG2**



0-120 bar 0-12 MPa
0-160 bar 0-16 MPa
0-250 bar 0-25 MPa
0-400 bar 0-40 MPa
0-600 bar 0-60 MPa
0-1000 bar 0-100 MPa

Attacco Gas 1/4"
Connection Gas 1/4"

**VALVOLE NON RITORNO
CHECK VALVES**

■ **UD1**



UD1/5
UD1/02
250 bar
25 MPa
3650 psi
180 l/min
48 gpm

Prearica / Load
5 bar - 0,5 MPa - 72 psi
0,2 bar - 0,02 MPa - 3 psi

**SLITTE TENDICINGHIE
SLIDES**

■ **TC-G**



Per installazioni fino a 50 hp/37 kW
For installation up to 50 hp/37 kW

**UGELLO ROTANTE
ROTATING NOZZLE**

■ **ROTOMAX 750**

Acciaio inox
Stainless steel



750 bar - 75 MPa - 11000 psi
50 l/min - 13.2 gpm

VF series

50HP



COSTRUZIONE

- Pompa a 3 pistoni tuffanti orizzontali, disponibile in 2 versioni.
- Carter simmetrico dotato di fissaggi inferiori e superiori per sporgenza albero a destra o sinistra.
- Sistema di raffreddamento pistoni e guarnizioni di pressione.
- Valvole aspirazione mandata a disposizione coassiale.
- Lubrificazione a sbattimento.

CONSTRUCTION

- Triplex plunger pump, available in 2 versions.
- Patent pending, symmetrical power end design featuring top and bottom mounting holes allowing for easy left to right shaft conversion.
- Pressure packing integrated cooling system.
- Horizontally fitted in-line valves.
- Splash lubrication.

Tipo pompa Pump type	Portata Volume		Pressione Pressure			g/ min r.p.m.	Potenza Power		Peso Weight kg	Dimensioni Dimensions mm
	l/ min	US Gpm	bar	MPa	p.s.i.		hp	kW		
VF 12	12,5	3.3	1500	150	21750	750	50	36,8	63	607x384x237
	15	4.0	1200	120	17500	900	50	36,8	63	607x384x237
VF 14	17	4.5	1100	110	16000	750	50	36,8	63	607x384x237
	23	6.0	800	80	11600	1000	50	36,8	63	607x384x237

Portate tecniche con rendimento volumetrico 100% / Volumes are theoretical at 100% volumetric efficiency

OPZIONI TRASMISSIONI - DRIVE OPTIONS

Flangia supporto per azionamenti diretti
Flange for direct drive mount



Riduttore
Gearbox



Kit campana e giunto per accoppiamento
a motori idraulici SAE J 744 tipo C
Bell housing and coupling for SAE J 744 C hydraulic motor



Predisposizione presa di forza ausiliaria
opposta albero moto
Auxiliary P.T.O. opposite to shaft side





**FILTRI
FILTERS**

■ **F50/80**

Acciaio inox
Stainless steel

Doppia cartuccia
Double cartridge

5/100
microns

10 bar - 1 MPa - 145 psi
40 l/min - 10.5 gpm



**DISTRIBUTORI PNEUMATICI
PNEUMATIC DUMPING VALVES**

■ **PN12**

Acciaio inox
Stainless steel

1500 bar
150 MPa
21755 psi
80 l/min
21 gpm



■ **PN14**

Acciaio inox
Stainless steel

PN14/800	PN14/1500
800 bar	1500 bar
80 MPa	150 MPa
11600 psi	21755 psi
120 l/min	80 l/min
32 gpm	21 gpm



**MANOMETRI
PRESSURE GAUGES**

■ **PG3**

Attacco Gas 1/2"
Connection Gas 1/2"



0-1000 bar
0-100 MPa

0-1600 bar
0-160 MPa

**VALVOLE DI MASSIMA PRESSIONE
MAX PRESSURE SETTING VALVES**

■ **S1503**

Acciaio inox
Stainless steel

1800 bar
180 MPa
26100 psi
30 l/min
7.9 gpm



**UGELLI ROTANTI
ROTATING NOZZLES**

■ **RMAX 750**

Acciaio inox
Stainless steel

750 bar - 75 MPa - 11000 psi
50 l/min - 13.2 gpm



**REGOLATORI DI PRESSIONE
REGULATING VALVES**

■ **R1510**

Acciaio inox
Stainless steel

1500 bar
150 MPa
21755 psi
100 l/min
26.4 gpm



**LANCIA COMPLETA
SPRAY GUN**

■ **P15** Servo assistita
Servo assisted

Scarico libero
Dump gun

1500 bar
150 MPa
21755 psi
40 l/min
10.6 gpm



■ **RMAX 1500**

Acciaio inox
Stainless steel

1500 bar - 150 MPa - 21755 psi
42 l/min - 11 gpm



**VALVOLE PNEUMATICHE
PNEUMATICALLY OPERATED VALVES**

■ **PNR1510**

Acciaio inox
Stainless steel

1500 bar
150 MPa
21755 psi
100 l/min
24.4 gpm



**VALVOLE A PEDALE
FOOT VALVES**

■ **VP12**

Acciaio inox
Stainless steel

1500 bar
150 MPa
21755 psi
80 l/min
21 gpm



UGELLI / NOZZLES

■ **N3**

Inserto in zaffiro
Sapphire orifice

N3/0
Max. 1000 bar
Max. 100 MPa
Max. 14500 psi

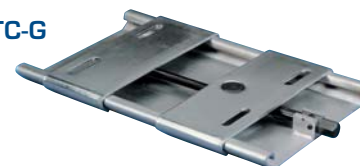
N3/30
Max. 500 bar
Max. 50 MPa
Max. 7250 psi



**SLITTE TENDICINGHIE
SLIDES**

■ **TC-G**

Per installazioni fino a 50 hp/37 kW
For installation up to 50 hp/37 kW



VK series

75HP



COSTRUZIONE

- Pompa volumetrica a 3 pistoni tuffanti orizzontali
- Carter simmetrico, brevettato
- Sistema di raffreddamento tenuto integrato
- Valvole aspirazione e mandata alta efficienza
- Lubrificazione a sbattimento.

CONSTRUCTION

- Triplex plunger pump
- Patent pending, symmetrical power and design
- Integrated cooling system
- High volumetric efficiency suction/delivery valves
- Splash lubrication

Tipo pompa Pump type	Portata Volume		Pressione Pressure			g/ min r.p.m.	Potenza Power		Peso Weight kg	Dimensioni Dimensions mm
	l/ min	US Gpm	bar	MPa	p.s.i.		hp	kW		
VK 12	20	5.3	1500	150	21750	1500 / 1800 / 2200	75	55,0	79,5	645x501x237
VK 14	28	7.4	1100	110	15950	1500 / 1800 / 2200	75	55,0	79,5	645x501x237

Portate tecniche con rendimento volumetrico 100% / Volumes are theoretical at 100% volumetric efficiency

OPZIONI TRASMISSIONI - DRIVE OPTIONS

Flangia per applicazioni dirette
Flange for direct drive mount



Presca diretta senza riduttore
Direct drive without gearbox

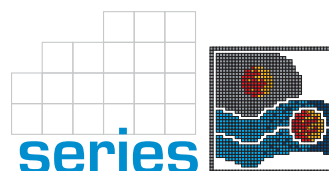


Kit campana e giunto per accoppiamento a motori idraulici SAE J 744 tipo C
Bell housing and coupling for SAE J 744 C hydraulic motor



Predisposizione presa di forza ausiliaria opposta albero moto
Auxiliary P.T.O. opposite to shaft side





**FILTRI
FILTERS**

■ F50/80

Acciaio inox
Stainless steel

Doppia cartuccia
Double cartridge

5/100
microns

10 bar - 1 MPa - 145 psi
40 l/min - 10.5 gpm



**DISTRIBUTORI PNEUMATICI
PNEUMATIC DUMPING VALVES**

■ PN12

Acciaio inox
Stainless steel

1500 bar
150 MPa
21755 psi
80 l/min
21 gpm



**MANOMETRI
PRESSURE GAUGES**

■ PG3

0-1000 bar
0-100 MPa

0-1600 bar
0-160 MPa

Attacco Gas 1/2"
Connection Gas 1/2"



**VALVOLE DI MASSIMA PRESSIONE
MAX PRESSURE SETTING VALVES**

■ S1503

1800 bar
180 MPa
26100 psi
30 l/min
7.9 gpm



Acciaio inox
Stainless steel

■ PN14

Acciaio inox
Stainless steel

PN14/800 **PN14/1500**
800 bar 1500 bar
80 MPa 150 MPa
11600 psi 21755 psi
120 l/min 80 l/min
32 gpm 21 gpm



**UGELLI ROTANTI
ROTATING NOZZLES**

■ RMAX 750

Acciaio inox
Stainless steel

750 bar - 75 MPa - 11000 psi
50 l/min - 13.2 gpm



**REGOLATORI DI PRESSIONE
REGULATING VALVES**

■ R1510

1500 bar
150 MPa
21755 psi
100 l/min
26.4 gpm



Acciaio inox
Stainless steel

**LANCIA COMPLETA
SPRAY GUN**

■ P15 Servo assistita
 Servo assisted

Scarico libero
Dump gun

1500 bar
150 MPa
21755 psi
40 l/min
10.6 gpm



■ RMAX 1500

Acciaio inox
Stainless steel

1500 bar - 150 MPa - 21755 psi
42 l/min - 11 gpm



**VALVOLE PNEUMATICHE
PNEUMATICALLY OPERATED VALVES**

■ PNR1510

Acciaio inox
Stainless steel

1500 bar
150 MPa
21755 psi
100 l/min
24.4 gpm



UGELLI / NOZZLES

■ N3

Inserto in zaffiro
Sapphire orifice

N3/0
Max. 1000 bar
Max. 100 MPa
Max. 14500 psi

N3/30
Max. 500 bar
Max. 50 MPa
Max. 7250 psi



**VALVOLE A PEDALE
FOOT VALVES**

■ VP12

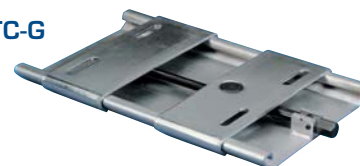
1500 bar
150 MPa
21755 psi
80 l/min
21 gpm



**SLITTE TENDICINGHIE
SLIDES**

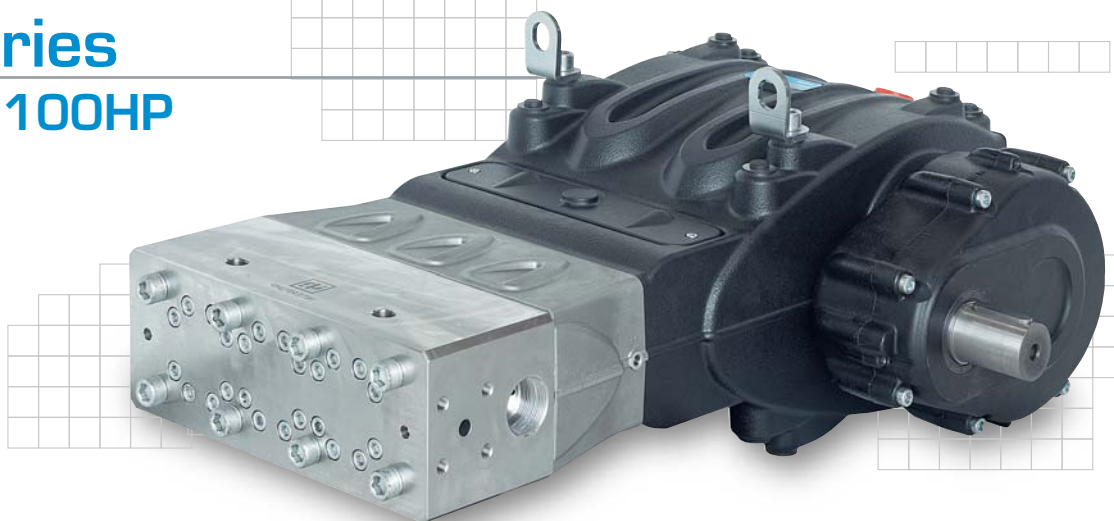
■ TC-G

Per installazioni fino a 50 hp/37 kW
For installation up to 50 hp/37 kW



SM series

100HP



COSTRUZIONE

- Pompa a 3 pistoni tuffanti orizzontali, disponibile in 6 versioni.
- Doppia guarnizione pressione.
- Sistema di raffreddamento pistoni e guarnizioni di pressione.
- Valvole aspirazione mandata a disposizione coassiale.
- Lubrificazione a sbattimento.
- Riduttore di giri laterale disponibile in tre rapporti riduzione e posizionabile a destra o sinistra della pompa.

CONSTRUCTION

- Triplex plunger pump, available in 6 versions.
- Double pressure packings
- Pressure packing integrated cooling system.
- Horizontally fitted in-line valves.
- Splash lubrication.
- External gear box available in three ratios and positionable on left or right side of the pump.

Tipo pompa Pump type	Portata Volume		Pressione Pressure			Con riduttore With gearbox g/min r.p.m.	Potenza Power		Peso Weight kg	Dimensioni Dimensions mm
	l/min	US Gpm	bar	MPa	p.s.i.		hp	kW		
SM 14	26	6.9	1500	150	21750	1500 / 1800 / 2200	101	74,5	260	878x583x358,8
SM 16	34	9.0	1200	120	17400	1500 / 1800 / 2200	106	77,9	260	878x583x358,8
SM 18	43	11.4	900	90	13050	1500 / 1800 / 2200	101	74,5	260	878x583x358,8
SM 20	53	14.0	750	75	10875	1500 / 1800 / 2200	103	75,9	260	878x583x358,8
SM 22	64	16.9	600	60	8700	1500 / 1800 / 2200	100	73,3	260	878x583x358,8
SM 24	76	20.1	500	50	7250	1500 / 1800 / 2200	99	72,6	260	878x583x358,8

Portate tecniche con rendimento volumetrico 100% / Volumes are theoretical at 100% volumetric efficiency

OPZIONI TRASMISSIONI - DRIVE OPTIONS

Preso moto femmina per accoppiamento diretto motore idraulico SAE J 744 C
SAE J 744 C hollow shaft P.T.O. for hydraulic motor direct mount

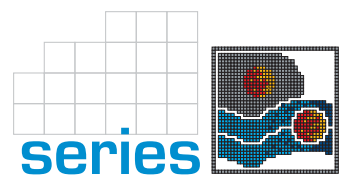


Predisposizione presa di forza ausiliaria opposta albero moto
Auxiliary P.T.O. opposite to shaft side



Preso diretta senza riduttore
Direct drive without gearbox





**FILTRI
FILTERS**

■ F60

Acciaio inox
Stainless steel

Doppia cartuccia
Double cartridge

5/100
microns



10 bar - 1 MPa - 145 psi
120 l/min - 31.7 gpm

**VALVOLE DI MASSIMA PRESSIONE
MAX PRESSURE SETTING VALVES**

■ S1510



1800 bar
180 MPa
26105 psi
100 l/min
26.4 gpm

Acciaio inox
Stainless steel

**REGOLATORI DI PRESSIONE
REGULATING VALVES**

■ R1510



1500 bar
150 MPa
21755 psi
100 l/min
26.4 gpm

Acciaio inox
Stainless steel

UGELLI / NOZZLES

■ N3

Inserito in zaffiro
Sapphire orifice

N3/0
Max. 1000 bar
Max. 100 MPa
Max. 14500 psi

N3/30
Max. 500 bar
Max. 50 MPa
Max. 7250 psi



**DISTRIBUTORI PNEUMATICI
PNEUMATIC DUMPING VALVES**

■ PN12

Acciaio inox
Stainless steel



1500 bar
150 MPa
21755 psi
80 l/min
21 gpm

■ PN14

Acciaio inox
Stainless steel



PN14/800 **PN14/1500**
800 bar 1500 bar
80 MPa 150 MPa
11600 psi 21755 psi
120 l/min 80 l/min
32 gpm 21 gpm

**VALVOLE PNEUMATICHE
PNEUMATICALLY OPERATED VALVES**

■ PNR1510

Acciaio inox
Stainless steel



1500 bar
150 MPa
21755 psi
100 l/min
24.4 gpm

**LANCIA COMPLETA
SPRAY GUN**

■ P15 Servo assistita
 Servo assisted

Scarico libero
Dump gun



1500 bar
150 MPa
21755 psi
40 l/min
10.6 gpm

**MANOMETRI
PRESSURE GAUGES**

■ PG3



0-1000 bar
0-100 MPa

0-1600 bar
0-160 MPa

Attacco Gas 1/2"
Connection Gas 1/2"

**UGELLI ROTANTI
ROTATING NOZZLES**

■ RMAX 750

Acciaio inox
Stainless steel



750 bar - 75 MPa - 11000 psi
50 l/min - 13.2 gpm

■ RMAX 1500

Acciaio inox
Stainless steel



1500 bar - 150 MPa - 21755 psi
42 l/min - 11 gpm

**VALVOLE A PEDALE
FOOT VALVES**

■ VP12

1500 bar
150 MPa
21755 psi
80 l/min
21 gpm



SK series

180HP



COSTRUZIONE

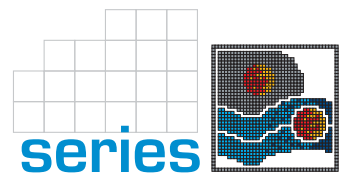
- Pompa a 3 pistoni tuffanti orizzontali, disponibile in 5 versioni.
- Doppia guarnizione pressione.
- Sistema di raffreddamento pistoni e guarnizioni di pressione.
- Valvole aspirazione mandata a disposizione coassiale.
- Lubrificazione a sbattimento.
- Riduttore di giri interno disponibile in 2 rapporti .
- Albero presa di moto doppia sporgenza.

CONSTRUCTION

- Triplex plunger pump, available in 5 versions.
- Double pressure packings
- Pressure packing integrated cooling system.
- Horizontally fitted in-line valves.
- Splash lubrication.
- Built-in gearbox available in 2 ratios.
- Drive shaft double PTO.

Tipo pompa Pump type	Portata - Volume				Pressione Pressure			Potenza Power				Peso Weight	Dimensioni Dimensions
	1500 r.p.m.		1750 r.p.m.		bar	MPa	p.s.i.	1500 r.p.m.		1750 r.p.m.			
	l/min	US Gpm	l/min	US Gpm					hp	kW	hp	kW	
SK 20	43	11.4	44	11.6	1500	150	21750	168	123	171	126	387,5	1064,5x672x348,5
SK 22	52	13.7	53	14.0	1300	130	18850	176	129	179	132	387,5	1064,5x672x348,5
SK 24	62	16.4	63	16.6	1100	110	15950	177	130	180	132	387,5	1064,5x672x348,5
SK 26	73	19.3	74	19.6	900	90	13050	171	126	173	127	387,5	1064,5x672x348,5
SK 28	84	22.3	86	22.7	800	80	11600	175	128	179	132	387,5	1064,5x672x348,5
SK 30	96	25.4	98	25.9	700	70	10150	175	128	178	131	387,5	1064,5x672x348,5

Portate tecniche con rendimento volumetrico 100% / Volumes are theoretical at 100% volumetric efficiency



**FILTRI
FILTERS**

■ F60

Acciaio inox
Stainless steel

Doppia cartuccia
Double cartridge

5/100
microns



10 bar - 1 MPa - 145 psi
120 l/min - 31.7 gpm

**VALVOLE DI MASSIMA PRESSIONE
MAX PRESSURE SETTING VALVES**

■ S1510

1800 bar
180 MPa
26105 psi
100 l/min
26.4 gpm



Acciaio inox
Stainless steel

**REGOLATORI DI PRESSIONE
REGULATING VALVES**

■ R1510

Acciaio inox
Stainless steel

1500 bar
150 MPa
21755 psi
100 l/min
26.4 gpm



UGELLI / NOZZLES

■ N3

Inserito in zaffiro
Sapphire orifice

N3/0
Max. 1000 bar
Max. 100 MPa
Max. 14500 psi

N3/30
Max. 500 bar
Max. 50 MPa
Max. 7250 psi



**DISTRIBUTORI PNEUMATICI
PNEUMATIC DUMPING VALVES**

■ PN12

Acciaio inox
Stainless steel

1500 bar
150 MPa
21755 psi
80 l/min
21 gpm



■ PN14

Acciaio inox
Stainless steel

PN14/800 **PN14/1500**
800 bar 1500 bar
80 MPa 150 MPa
11600 psi 21755 psi
120 l/min 80 l/min
32 gpm 21 gpm



**VALVOLE PNEUMATICHE
PNEUMATICALLY OPERATED VALVES**

■ PNR1510

Acciaio inox
Stainless steel

1500 bar
150 MPa
21755 psi
100 l/min
24.4 gpm



**LANCIA COMPLETA
SPRAY GUN**

■ P15 Servo assistita
 Servo assisted

Scarico libero
Dump gun



1500 bar
150 MPa
21755 psi
40 l/min
10.6 gpm

**MANOMETRI
PRESSURE GAUGES**

■ PG3

0-1000 bar
0-100 MPa

0-1600 bar
0-160 MPa



Attacco Gas 1/2"
Connection Gas 1/2"

**UGELLI ROTANTI
ROTATING NOZZLES**

■ RMAX 750

Acciaio inox
Stainless steel

750 bar - 75 MPa - 11000 psi
50 l/min - 13.2 gpm



■ RMAX 1500

Acciaio inox
Stainless steel

1500 bar - 150 MPa - 21755 psi
42 l/min - 11 gpm



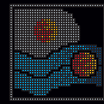
**VALVOLE A PEDALE
FOOT VALVES**

■ VP12

1500 bar
150 MPa
21755 psi
80 l/min
21 gpm







Pratissoli



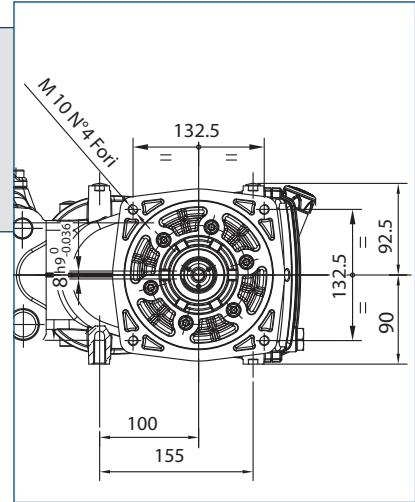
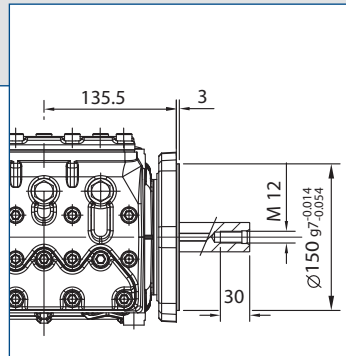
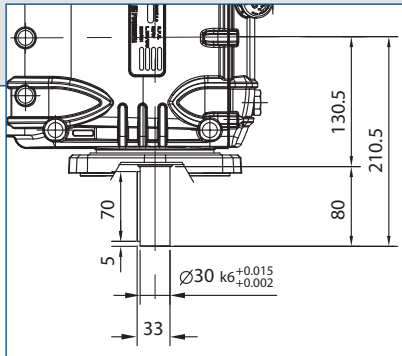
KE series 25HP



OPZIONI TRASMISSIONI - DRIVE OPTIONS

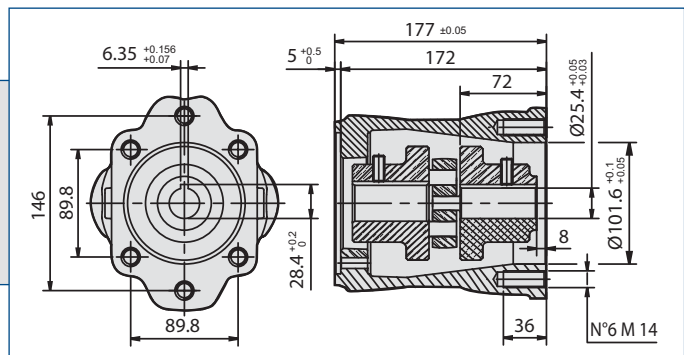
Flangia supporto per azionamenti diretti

Flange for direct drive mount



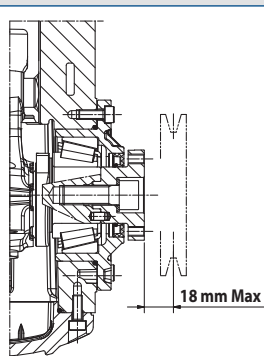
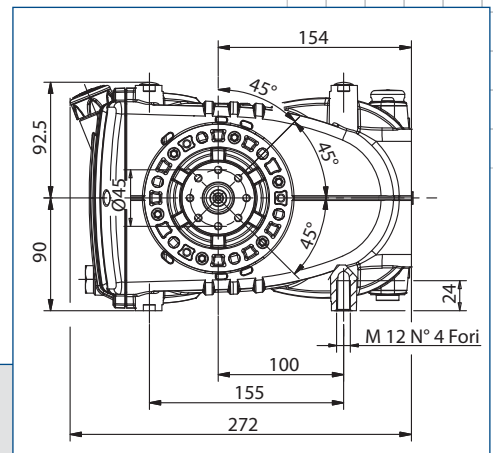
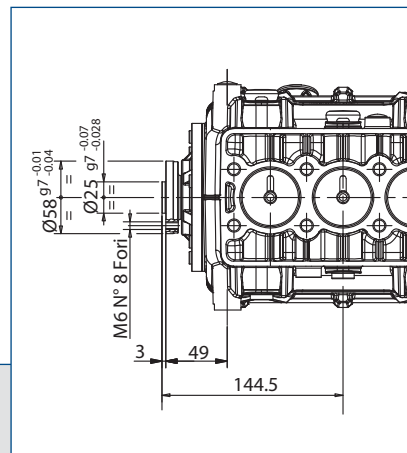
Kit campana e giunto per accoppiamento a motori idraulici SAE J 744 tipo B-B

Bell housing and coupling for SAE J 744 B-B hydraulic motor



Presca di forza ausiliaria

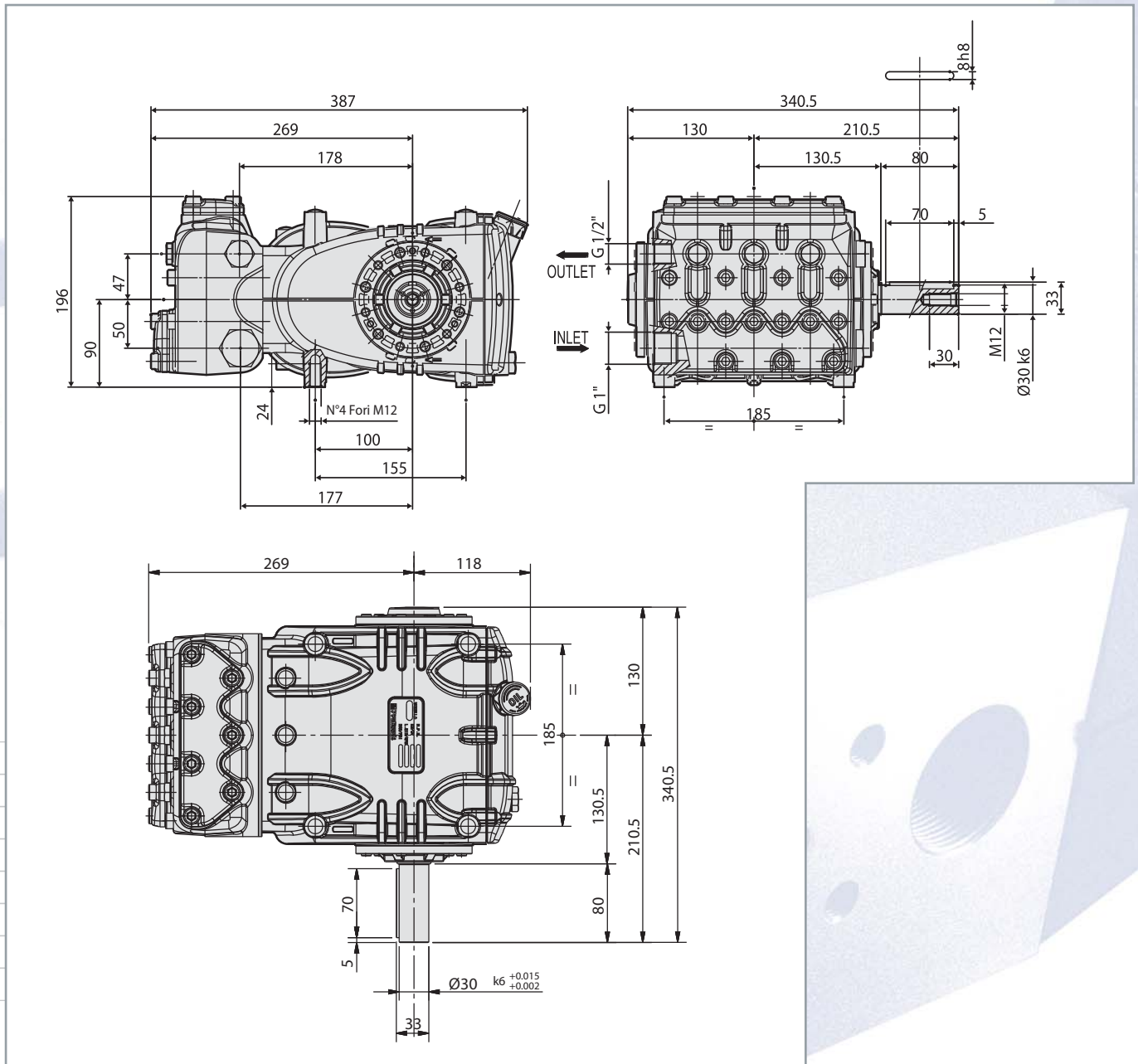
Auxiliary P.T.O.



La coppia max è prelevabile anche con pompa a pieno carico (25 hp sulla presa primaria).
Max. torque is available also with pump at full load (25 hp at the primary shaft).

	Coppia max. Max torque (Nm)	Potenza max. Max power (Hp)	rpm
Cinghie - Pulley / belts	20	2,3 4,1	800 1450
Giunto diretto - Flex joint direct	40	4,6 8,2	800 1450

DIMENSIONI D'INGOMBRO - OVERALL DIMENSIONS



KT_{LP} series

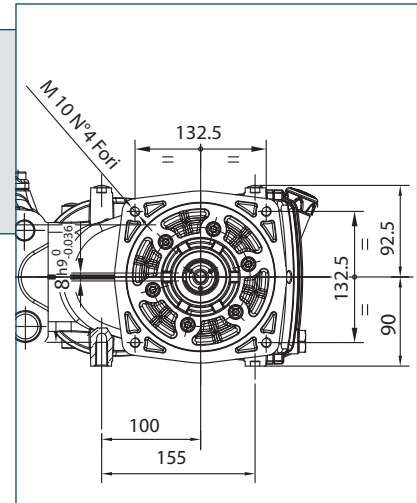
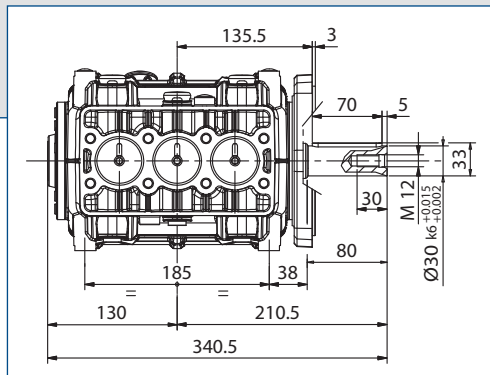
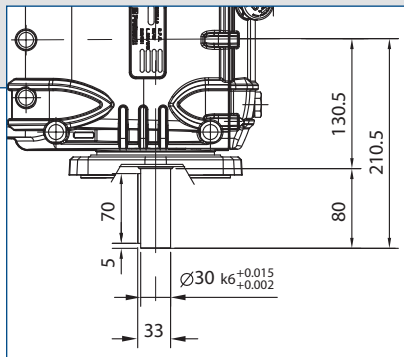
35HP



OPZIONI TRASMISSIONI - DRIVE OPTIONS

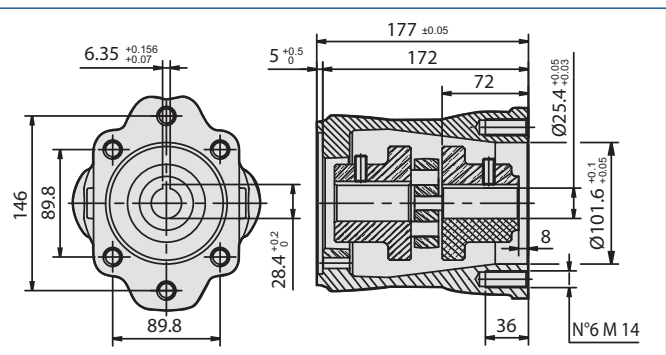
Flangia supporto per azionamenti diretti

Flange for direct drive mount



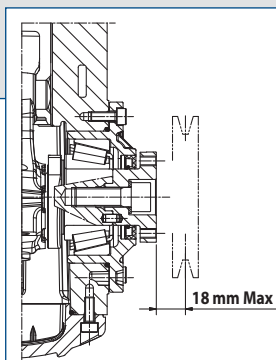
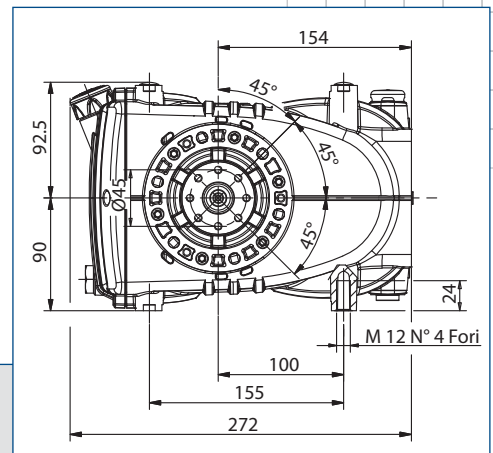
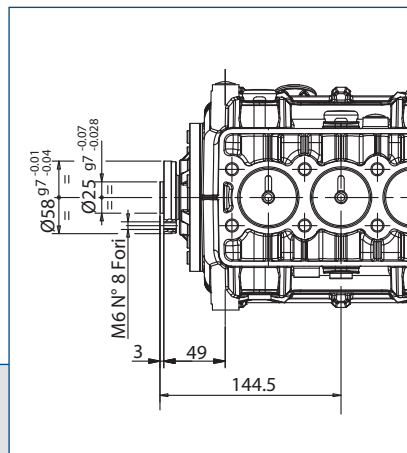
Kit campana e giunto per accoppiamento a motori idraulici SAE J 744 tipo B-B

Bell housing and coupling for SAE J 744 B-B hydraulic motor



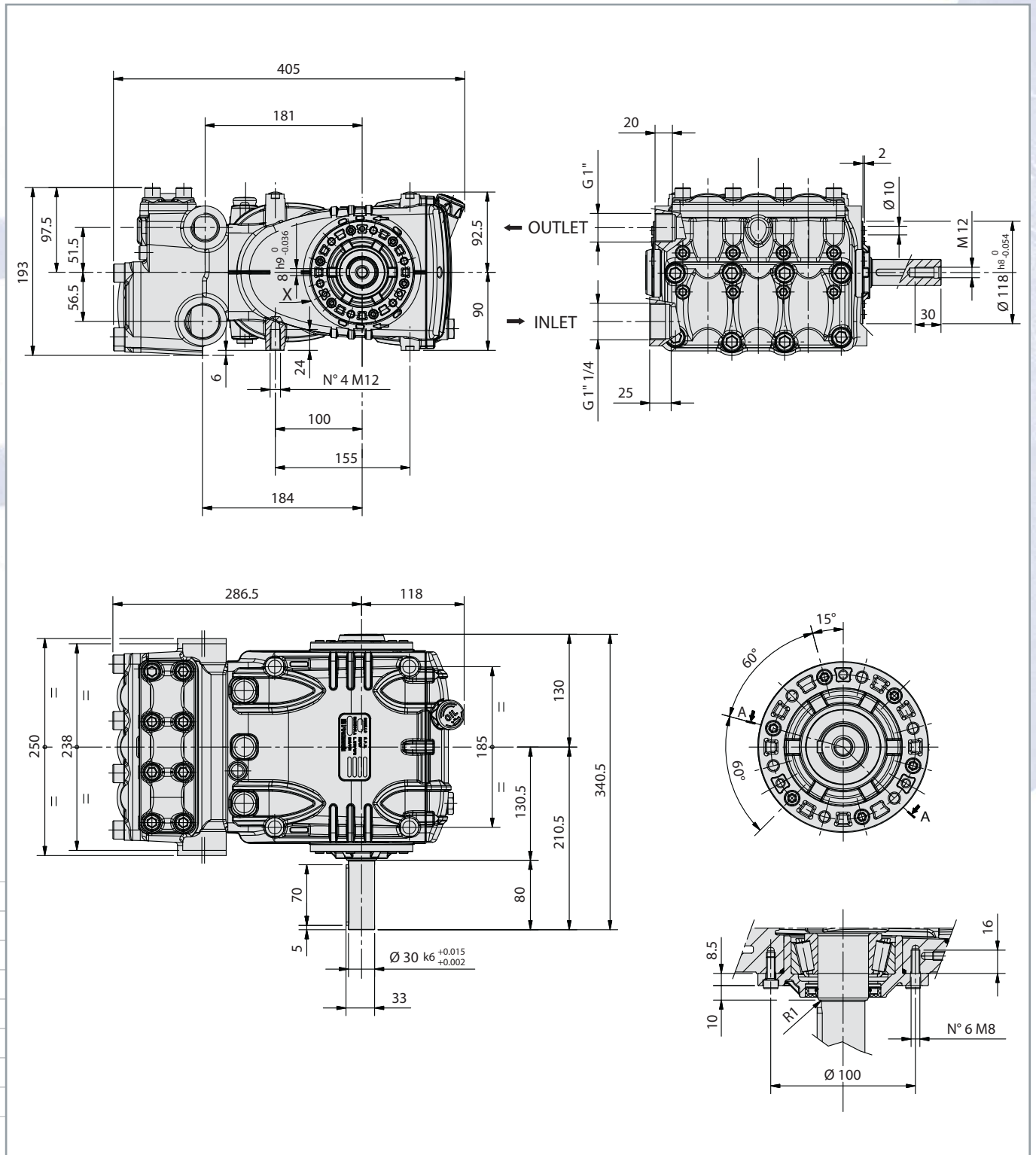
Presca di forza ausiliaria

Auxiliary P.T.O.



La coppia max è prelevabile anche con pompa a pieno carico (25 hp sulla presa primaria).
Max. torque is available also with pump at full load (25 hp at the primary shaft).

	Coppia max. Max torque (Nm)	Potenza max. Max power (Hp)	rpm
Cinghie - Pulley / belts	20	2,3 4,1	800 1450
Giunto diretto - Flex joint direct	40	4,6 8,2	800 1450



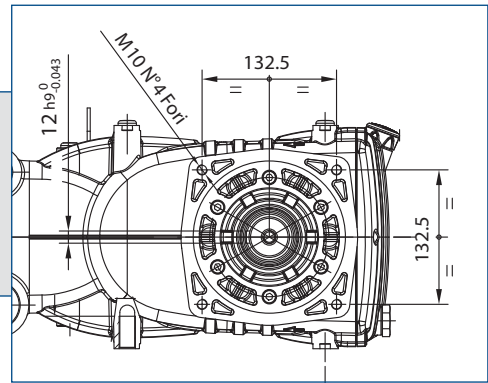
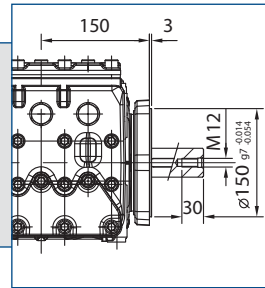
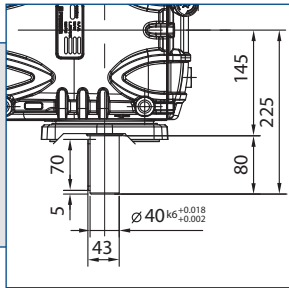
KF series 50HP



OPZIONI TRASMISSIONI - DRIVE OPTIONS

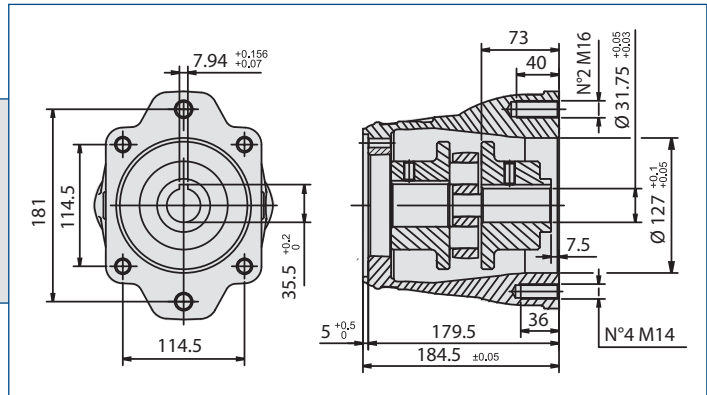
**Flangia supporto
per azionamenti
diretti**

*Flange for direct
drive mount*



**Kit campana e giunto per accoppiamento
a motori idraulici SAE J 744 tipo C**

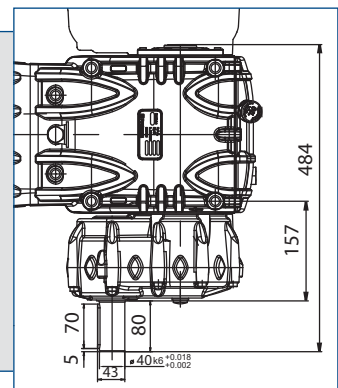
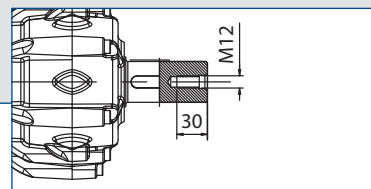
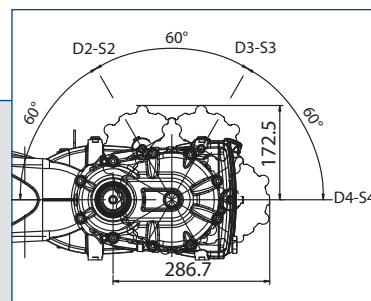
*Bell housing and coupling for
SAE J 744 C hydraulic motor*

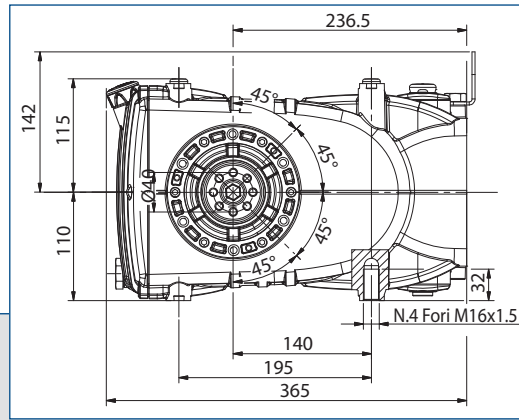
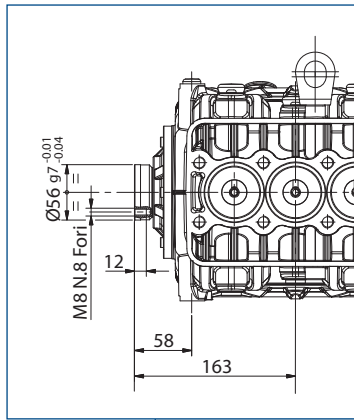


Riduttore / Gearbox

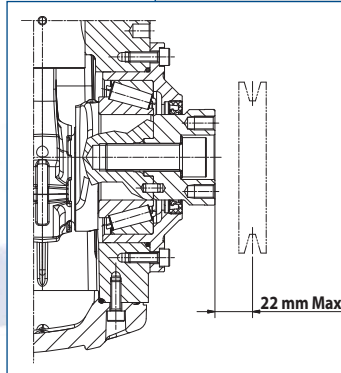
Le pompe KF sono disponibili su richiesta con riduttore di giri laterale. Il riduttore è disponibile in 3 rapporti ed installabile a dx o sx della pompa in 4 differenti posizioni. Rapporti di riduzione: R=1,25:1 - R=1,50:1 - R=1,83:1

KF pumps can be supplied with a optional gearbox available in 3 different ratios. The gearbox can be mounted on the left or right side of the pump in 4 different angles, at customer choice. Gearbox ratios: R=1,25:1 - R=1,50:1 - R=1,83:1





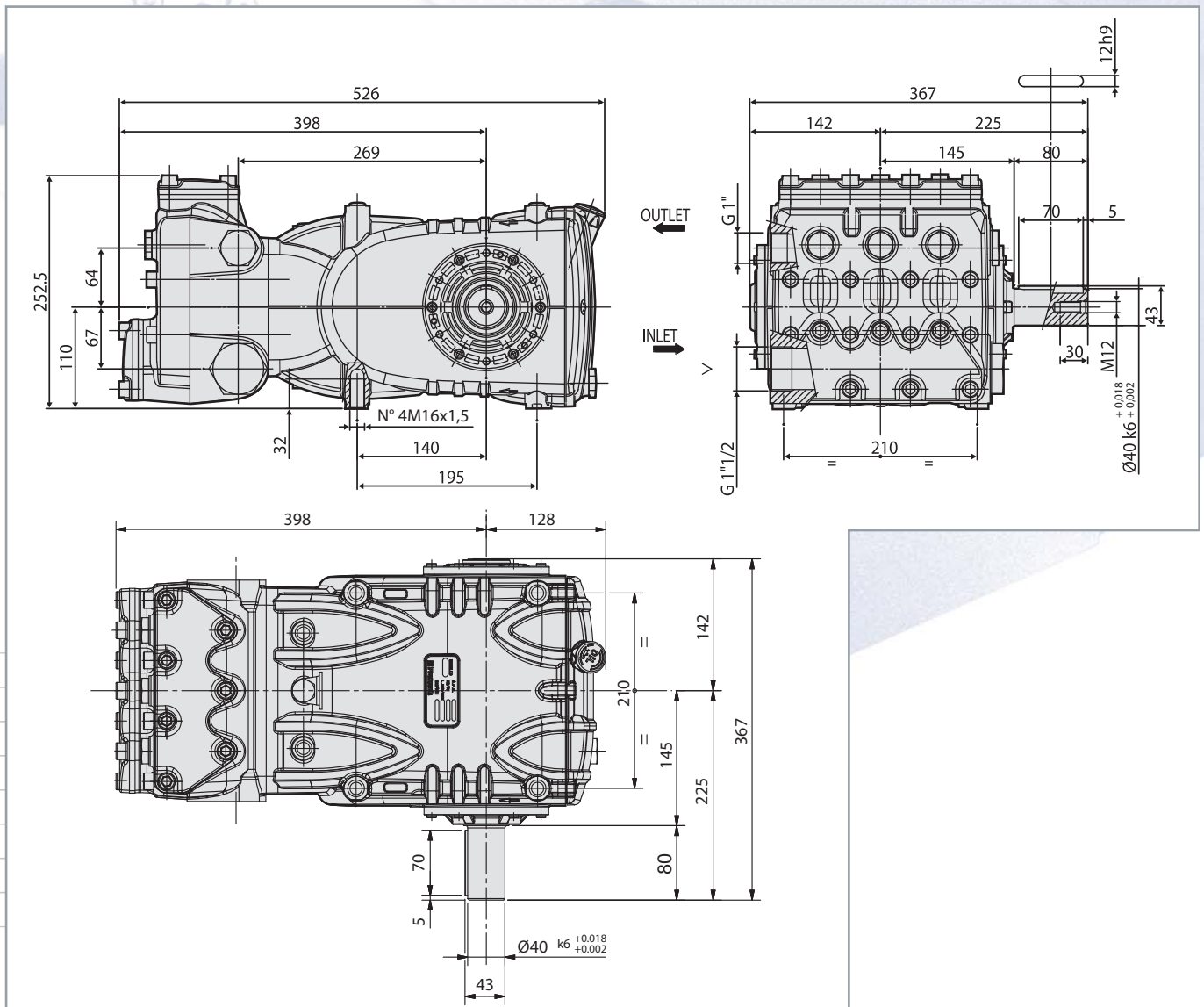
Presa di forza ausiliaria
Auxiliary P.T.O.



La coppia max è prelevabile anche con pompa a pieno carico (50 hp sulla presa primaria).
Max. torque is available also with pump at full load (50 hp at the primary shaft).

	Coppia max. Max torque (Nm)	Potenza max. Max power (Hp)	rpm
Cinghie - Pulley / belts	65	7,0	750
		7,4	800
		8,3	900
		9,3	1000
Giunto diretto - Flex joint direct	130	14,0	750
		14,8	800
		16,6	900
		18,6	1000

DIMENSIONI D'INGOMBRO - OVERALL DIMENSIONS

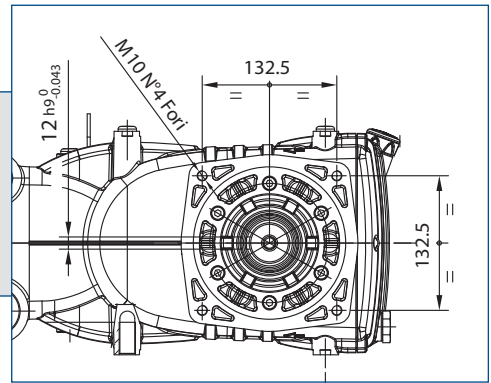
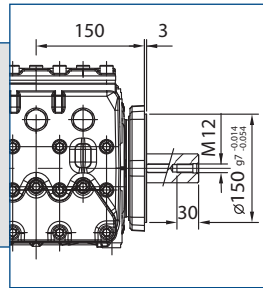
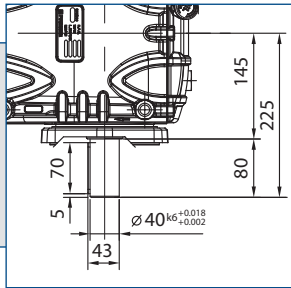


KS series
75HP

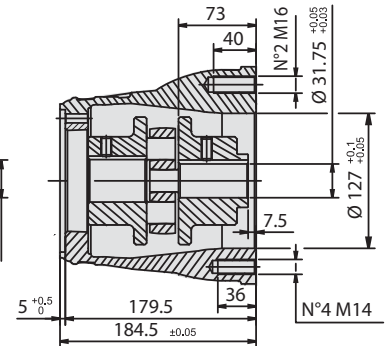
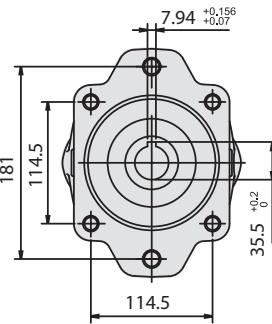


OPZIONI TRASMISSIONI - DRIVE OPTIONS

Flangia supporto per azionamenti diretti
Flange for direct drive mount

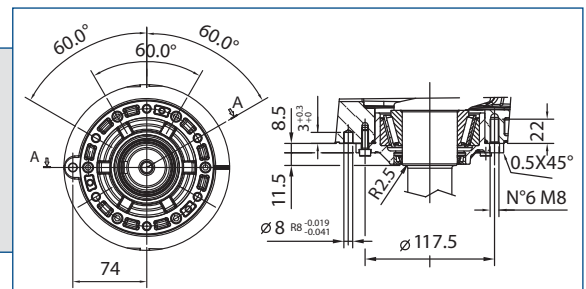
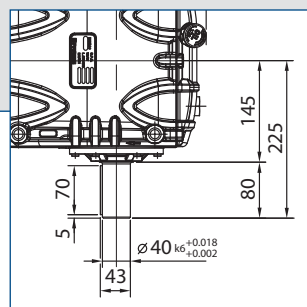
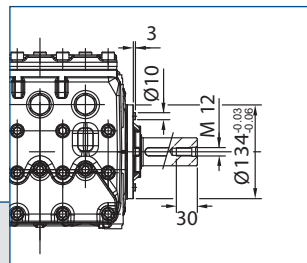


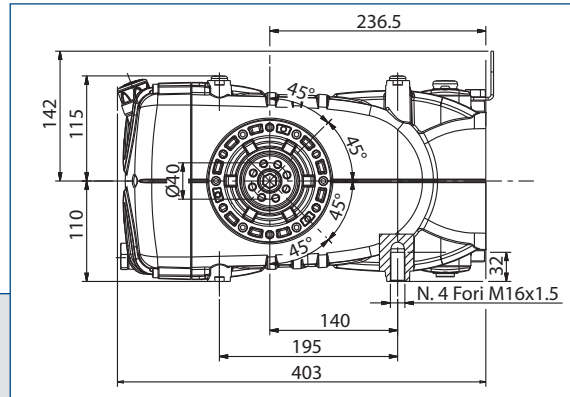
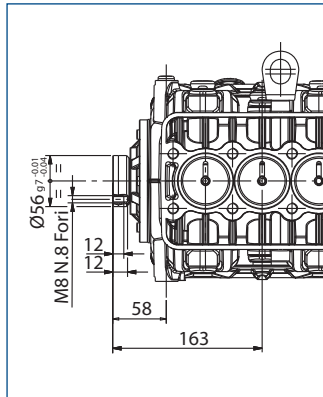
Kit campana e giunto per accoppiamento a motori idraulici SAE J 744 tipo C
Bell housing and coupling for SAE J 744 C hydraulic motor



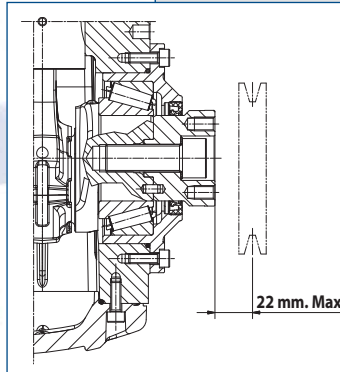
Preso diretta senza riduttore

Direct drive without gearbox





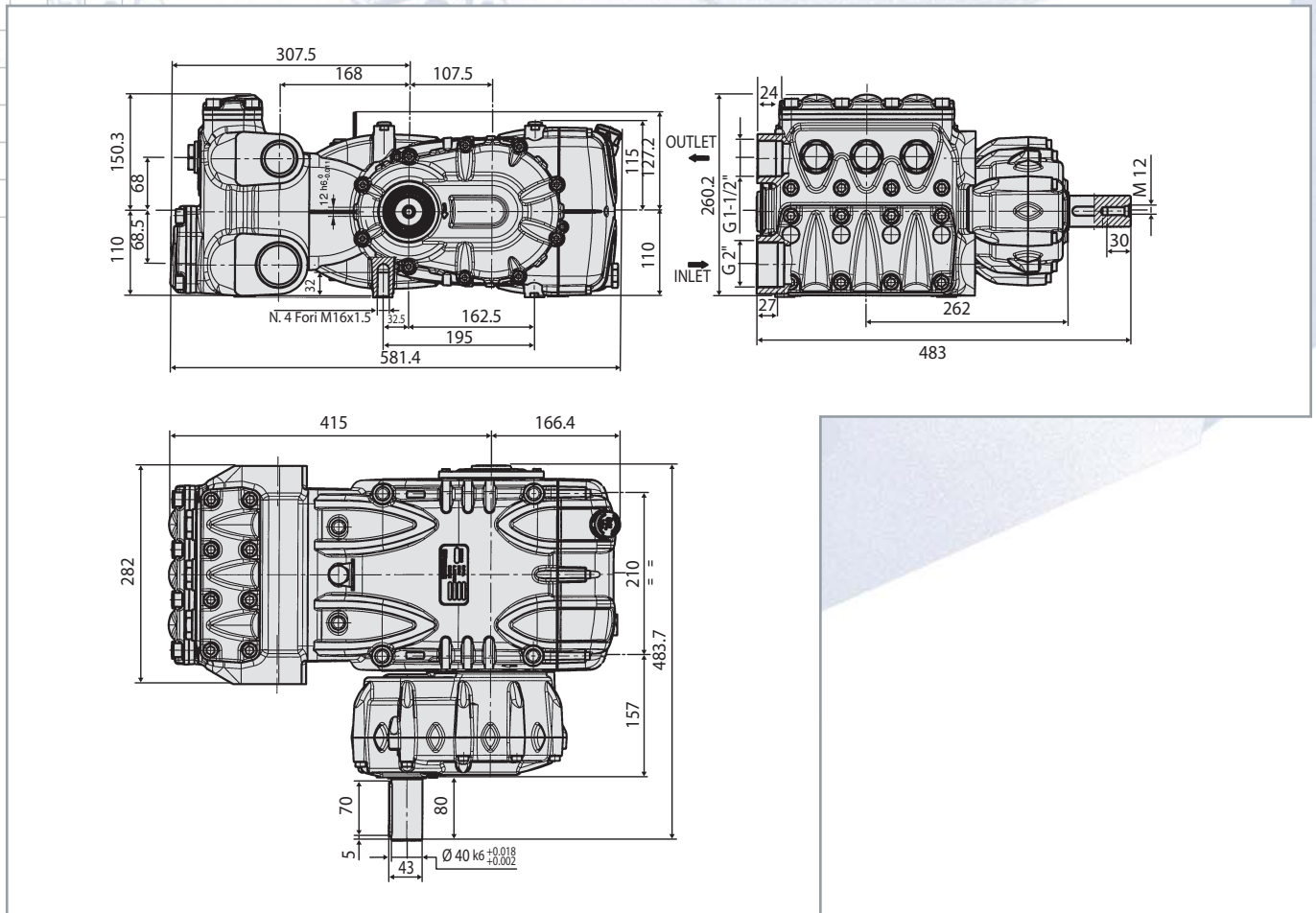
Presa di forza ausiliaria
Auxiliary P.T.O.



La coppia max è prelevabile anche con pompa a pieno carico (75 hp sulla presa primaria).
Max. torque is available also with pump at full load (75 hp at the primary shaft).

	Coppia max. Max torque (Nm)	Potenza max. Max power (Hp)	rpm
Cinghie - Pulley / belts	65	7,0	750
		7,4	800
		8,3	900
		9,3	1000
		11,1	1200
Giunto diretto - Flex joint direct	130	14,0	750
		14,8	800
		16,6	900
		18,6	1000
		22,2	1200

DIMENSIONI D'INGOMBRO - OVERALL DIMENSIONS





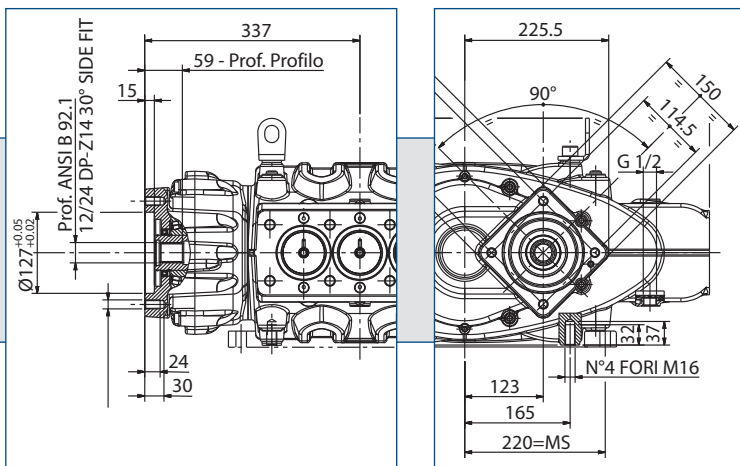
MW series
100HP



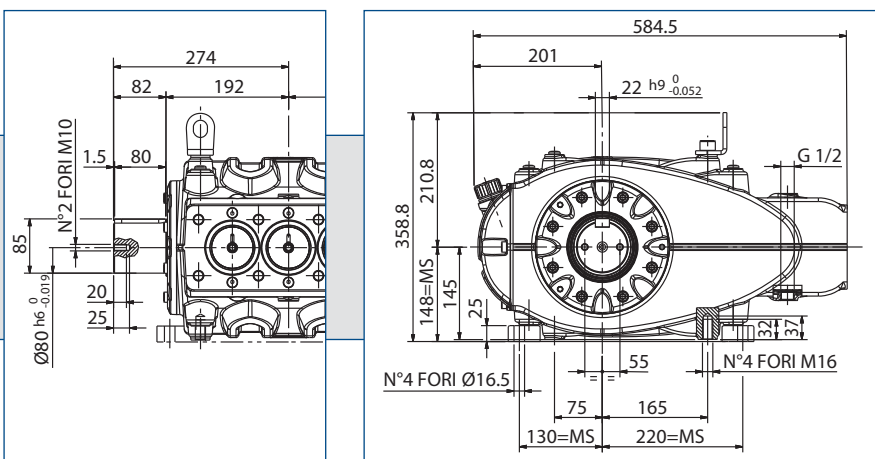
OPZIONI TRASMISSIONI - DRIVE OPTIONS

Versione per azionamento
con motore
idraulico SAE J 744 tipo C

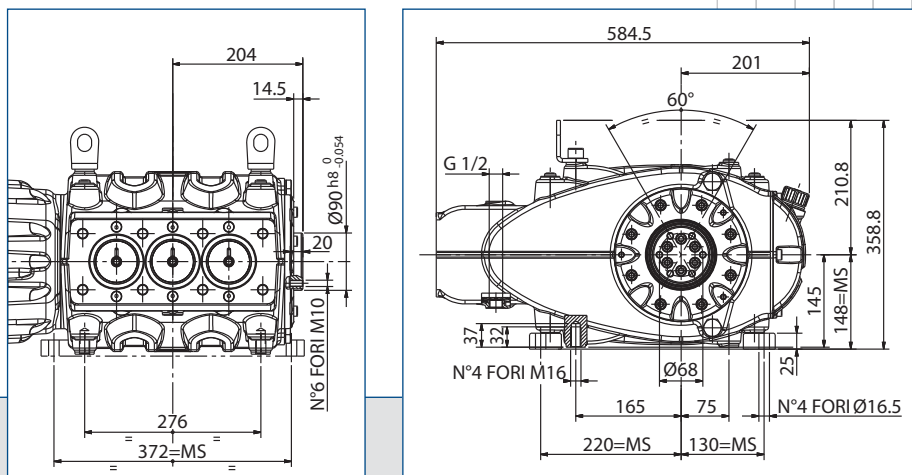
*SAE J 744 C type
direct coupling*



Presenza diretta senza riduttore
Direct drive without gearbox



Presenza di forza ausiliaria
Auxiliary P.T.O.

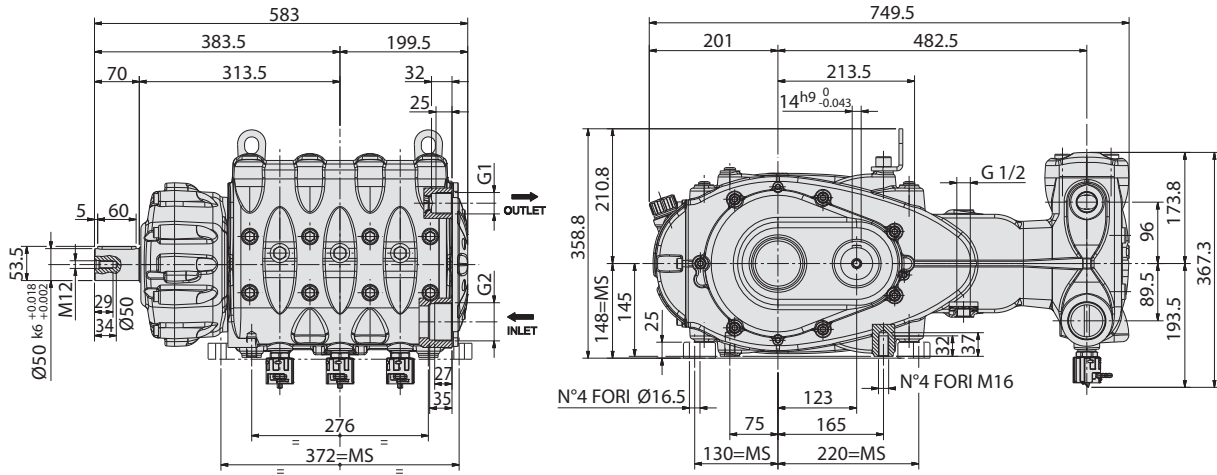


La coppia max è prelevabile anche con pompa a pieno carico (100 hp sulla presa primaria).
Max. torque is available also with pump at full load (100 hp at the primary shaft).

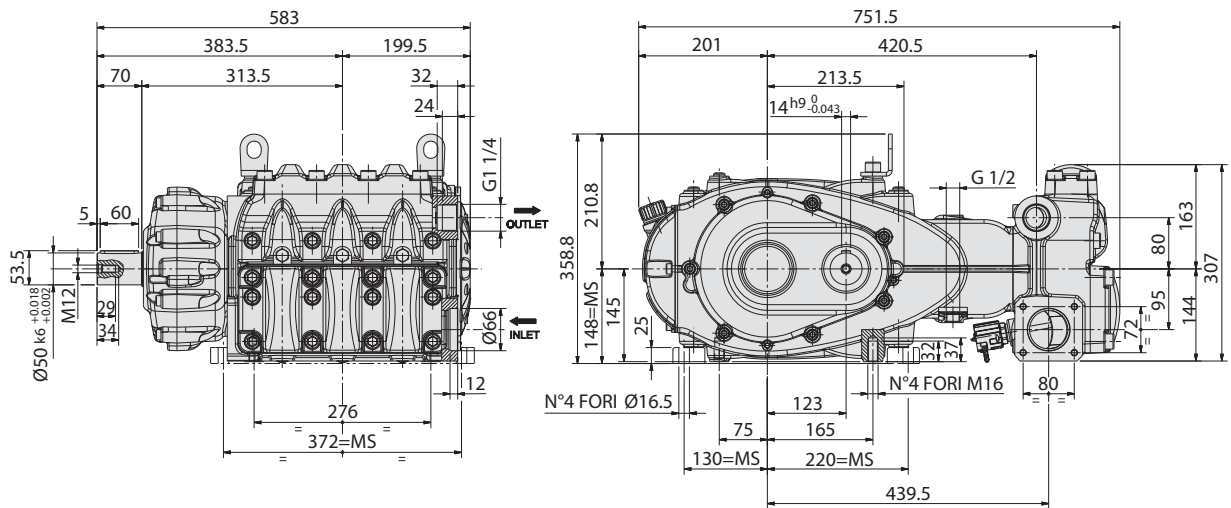
	Coppia max. Max torque (Nm)	Potenza max. Max power (Hp)	rpm
Cinghie - Pulley / belts	150	17,0	800
Giunto diretto - Flex joint direct	220	25,0	800

DIMENSIONI D'INGOMBRO - OVERALL DIMENSIONS

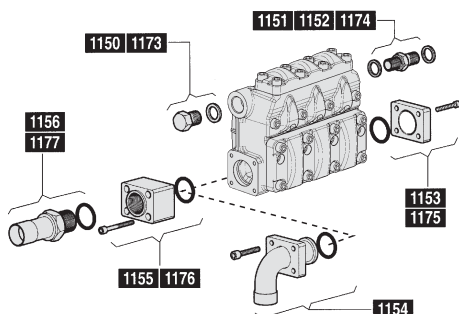
MW Series: MW 32 - MW 36 - MW 40



MW Series: MW 45 - MW 50 - MW 55



KIT DI CONNESSIONE - CONNECTION KIT



MW 45 - MW 50 - MW 55 - MWR 45 - MWR 50 - MWR 55

KIT 1150	OUTLET	G1"1/4
KIT 1151	OUTLET	G1"1/4 - G1"1/2
KIT 1152	OUTLET	G1"1/4 - G1"1/4
KIT 1153	INLET	-
KIT 1154	INLET	O.D. \varnothing 76 mm E
KIT 1155	INLET	G2" 1/2
KIT 1156	INLET	O.D. \varnothing 76 mm E

MWN 45 - MWN 50 - MWN 55 - MW 45 NR - MW 50 NR - MW 55 NR

KIT 1173	OUTLET	G1"1/4
KIT 1174	OUTLET	G1"1/4 - G1"1/4
KIT 1175	INLET	-
KIT 1176	INLET	G2" 1/2
KIT 1177	INLET	O.D. \varnothing 76 mm E

MK series 150HP



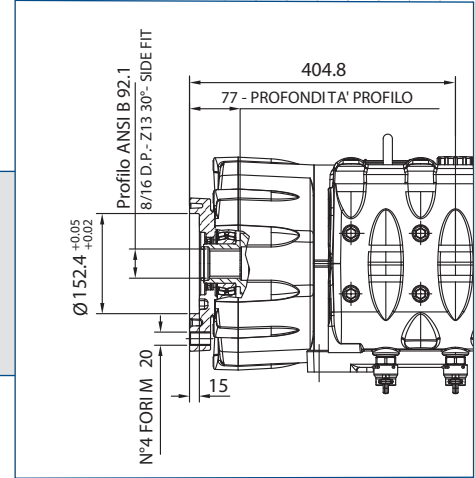
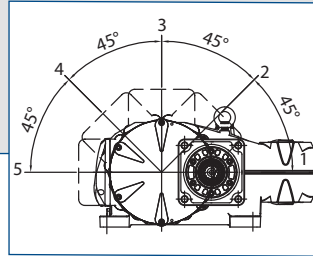
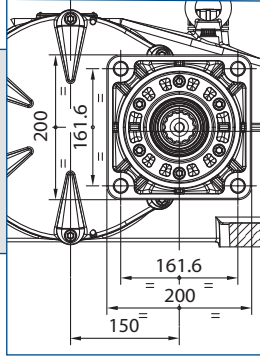
MKS series 180HP



OPZIONI TRASMISSIONI - DRIVE OPTIONS

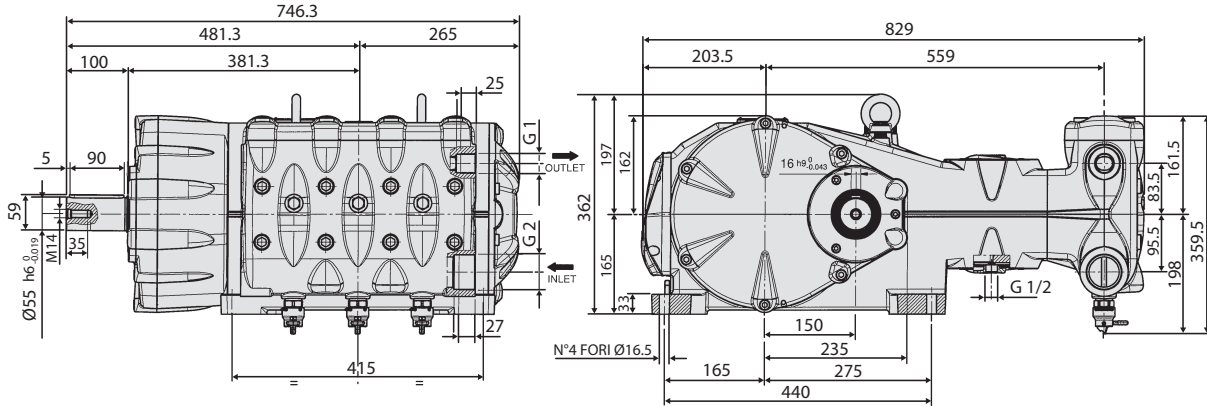
Versione per
azionamento con
motore idraulico
SAE J 744 tipo D

SAE J 744 - D Type
direct coupling

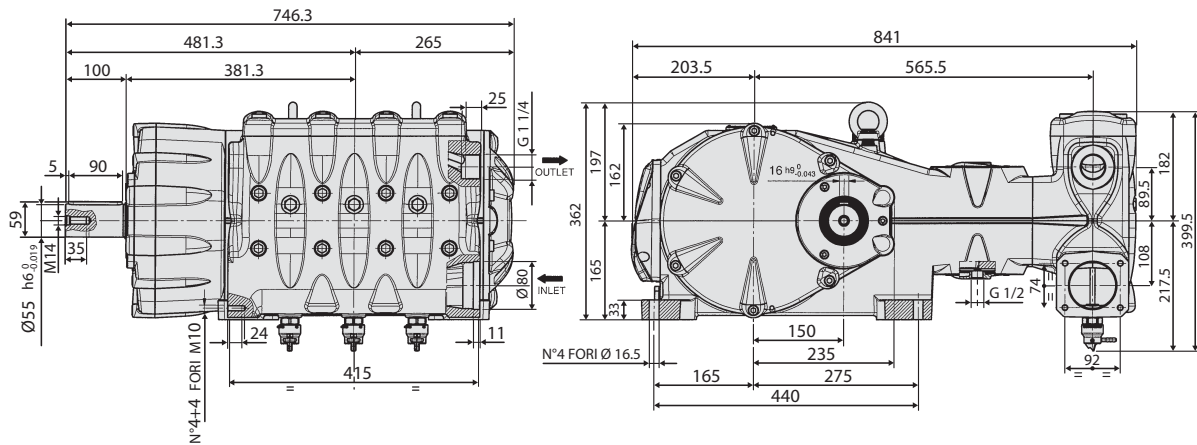


DIMENSIONI D'INGOMBRO - OVERALL DIMENSIONS

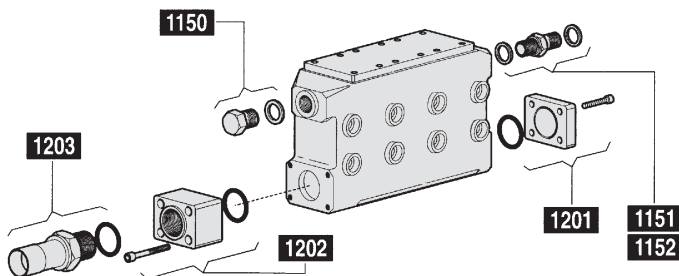
MK- MKS Series: MK 40 - MK 45 - MK 50 - MKS 40 - MKS 45 - MKS 50



MK-MKS Series: MK 55 - MK 60 - MK 65 - MKS 55 - MKS 60 - MKS 65



KIT DI CONNESSIONE - CONNECTION KIT - MK 55 - MK 60 - MK 65 - MKS 55 - MKS 60 - MKS 65



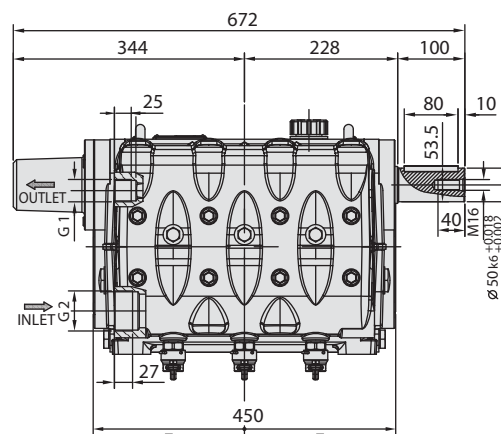
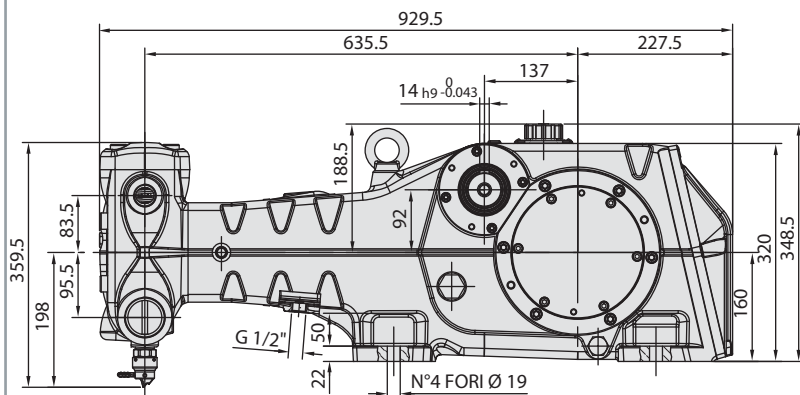
KIT 1150	OUTLET	G 1" 1/4
KIT 1151	OUTLET	G 1" 1/4 - G 1" 1/2
KIT 1152	OUTLET	G 1" 1/4 - G 1" 1/4
KIT 1201	INLET	-
KIT 1202	INLET	G 3"
KIT 1203	INLET	O.D. Ø 90 mm E



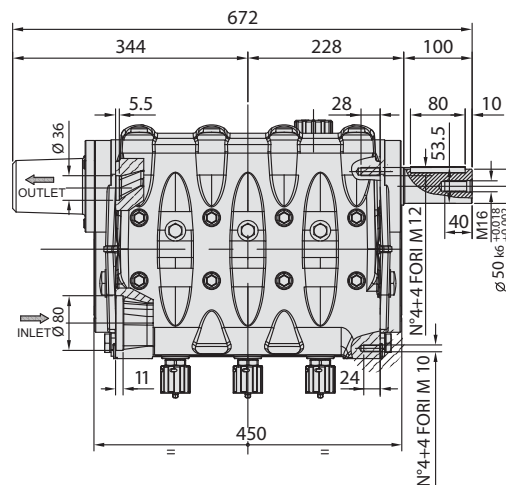
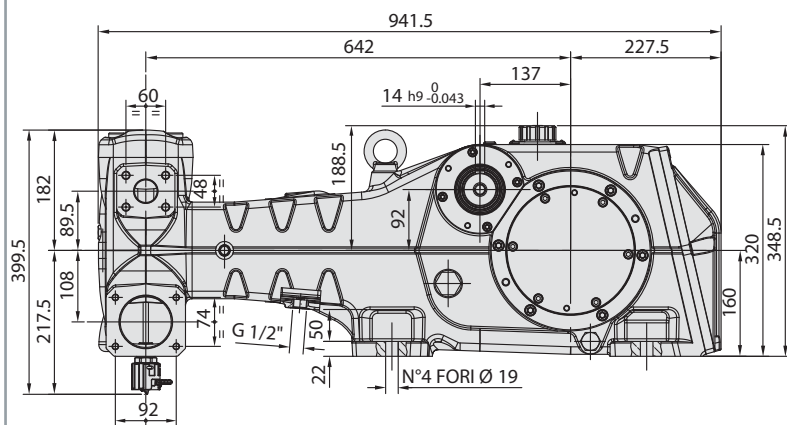
series **LK**
180HP

DIMENSIONI D'INGOMBRO - OVERALL DIMENSIONS

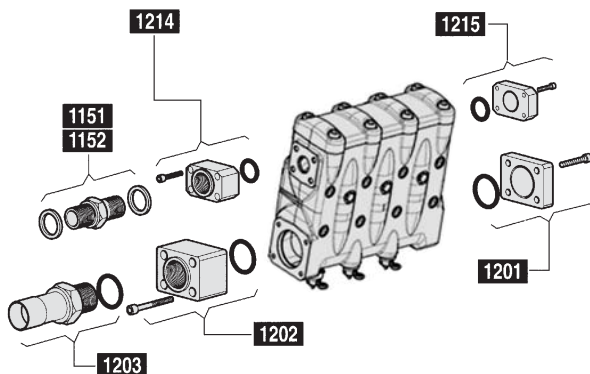
LK Series: LK 36 - LK 40 - LK 45



LK Series: LK 50 - LK 55 - LK 60



KIT DI CONNESSIONE - CONNECTION KIT - LK 50 - LK 55 - LK 60



KIT 1151	OUTLET	G 1" 1/4 - G 1" 1/2
KIT 1152	OUTLET	G 1" 1/4 - G 1" 1/4
KIT 1201	INLET	-
KIT 1202	INLET	G 3"
KIT 1203	INLET	O.D. Ø 90 mm E
KIT 1214	OUTLET	G 1" 1/4
KIT 1215	OUTLET	-

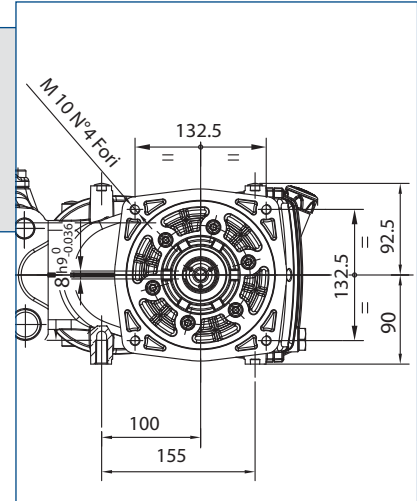
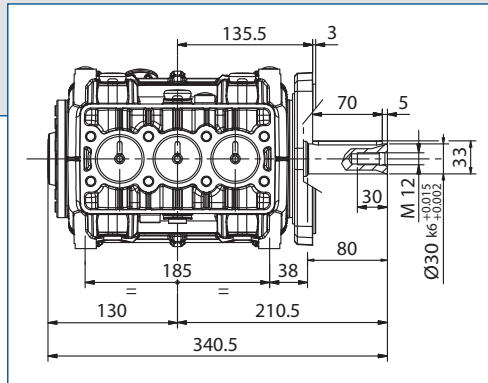
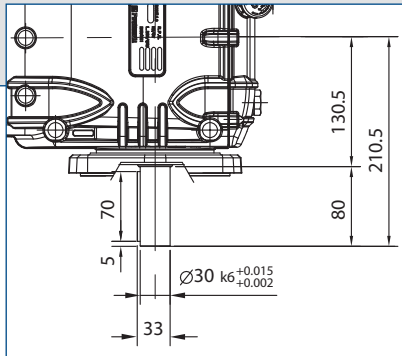
KT_{HP} series 35HP



OPZIONI TRASMISSIONI - DRIVE OPTIONS

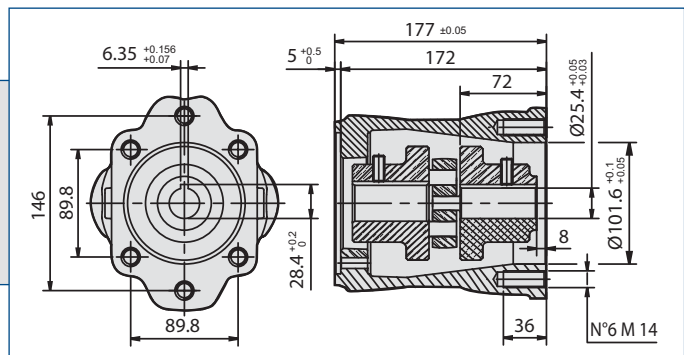
Flangia supporto per azionamenti diretti

Flange for direct drive mount



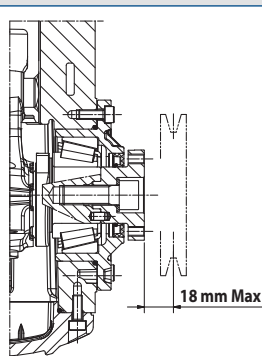
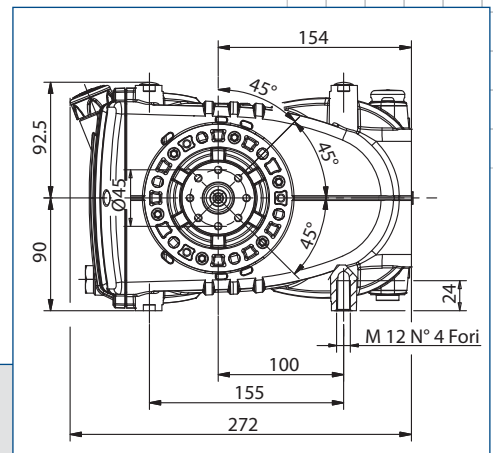
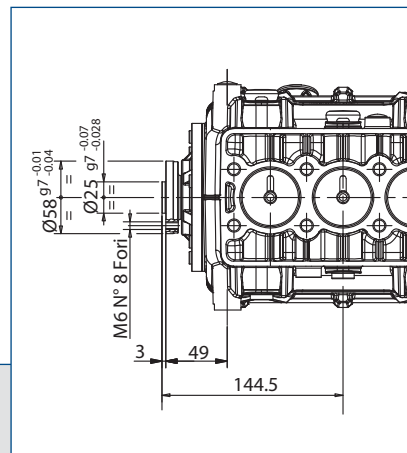
Kit campana e giunto per accoppiamento a motori idraulici SAE J 744 tipo B-B

Bell housing and coupling for SAE J 744 B-B hydraulic motor



Presca di forza ausiliaria

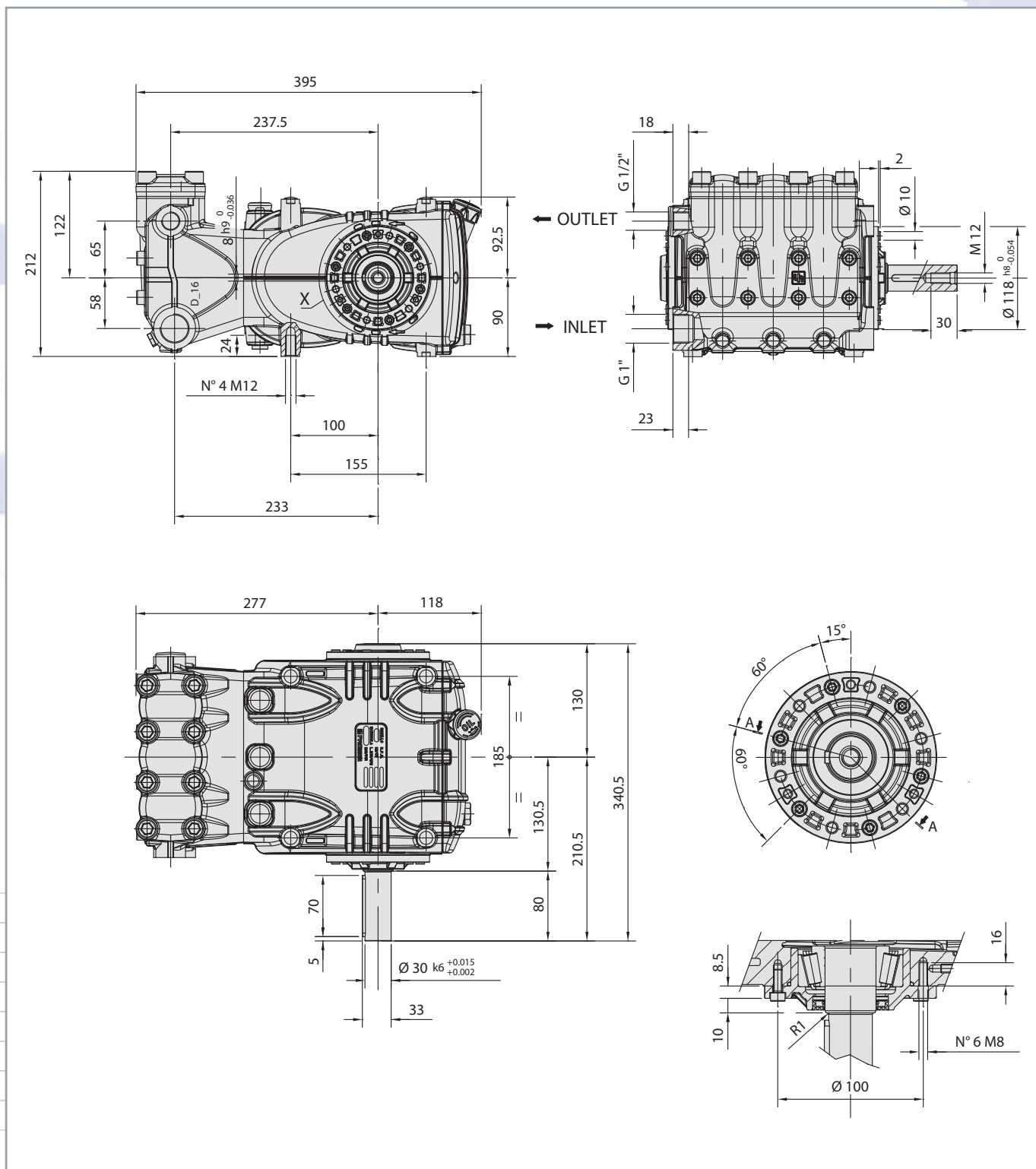
Auxiliary P.T.O.



La coppia max è prelevabile anche con pompa a pieno carico (25 hp sulla presa primaria).
Max. torque is available also with pump at full load (25 hp at the primary shaft).

	Coppia max. Max torque (Nm)	Potenza max. Max power (Hp)	rpm
Cinghie - Pulley / belts	20	2,3 4,1	800 1450
Giunto diretto - Flex joint direct	40	4,6 8,2	800 1450

DIMENSIONI D'INGOMBRO - OVERALL DIMENSIONS



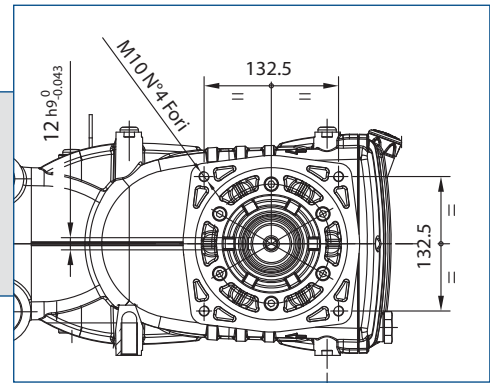
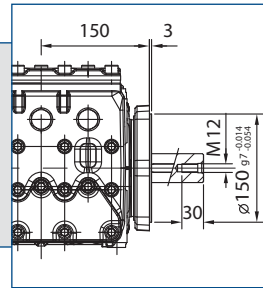
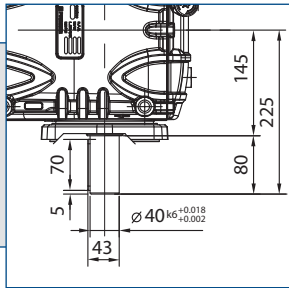
HF series 50HP



OPZIONI TRASMISSIONI - DRIVE OPTIONS

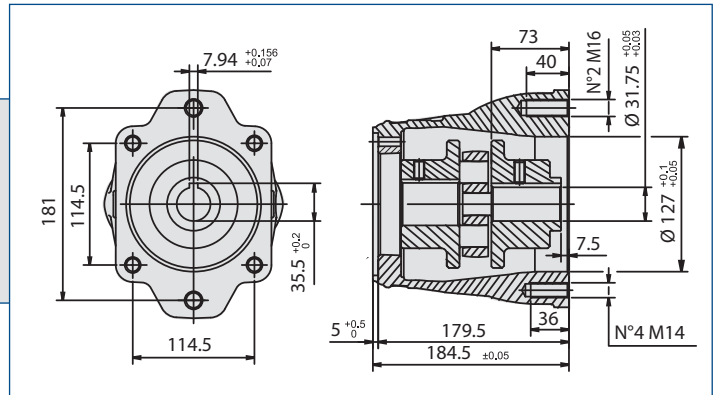
Flangia supporto per azionamenti diretti

Flange for direct drive mount



Kit campana e giunto per accoppiamento a motori idraulici SAE J 744 tipo C

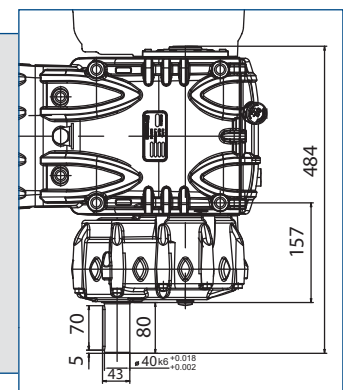
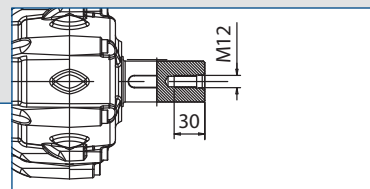
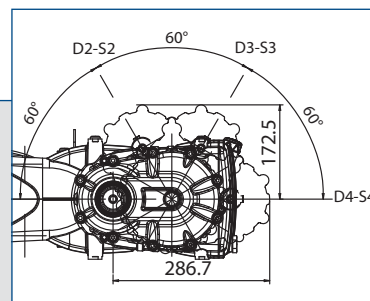
Bell housing and coupling for SAE J 744 C hydraulic motor

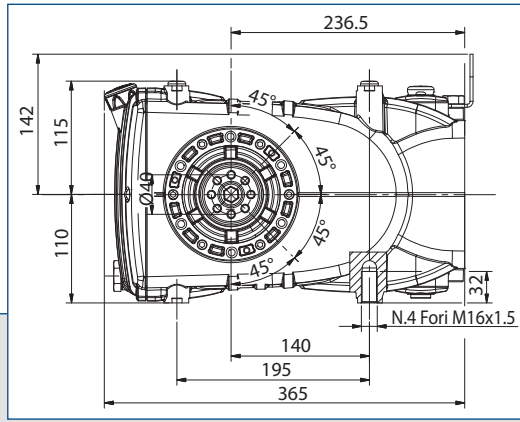
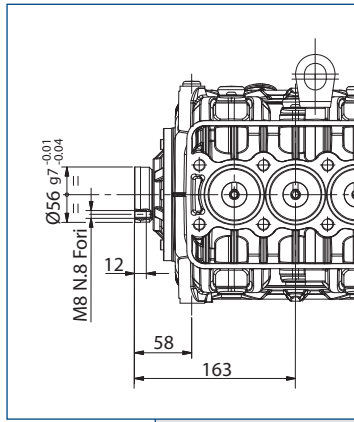


Riduttore / Gearbox

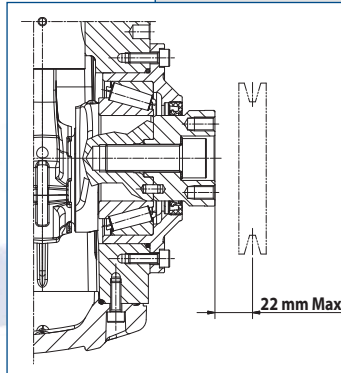
Le pompe HF sono disponibili su richiesta con riduttore di giri laterale. Il riduttore è disponibile in 3 rapporti ed installabile a dx o sx della pompa in 4 differenti posizioni. Rapporti di riduzione: R=1,25:1 - R=1,50:1 - R=1,83:1

HF pumps can be supplied with a optional gearbox available in 3 different ratios. The gearbox can be mounted on the left or right side of the pump in 4 different angles, at customer choice. Gearbox ratios: R=1,25:1 - R=1,50:1 - R=1,83:1





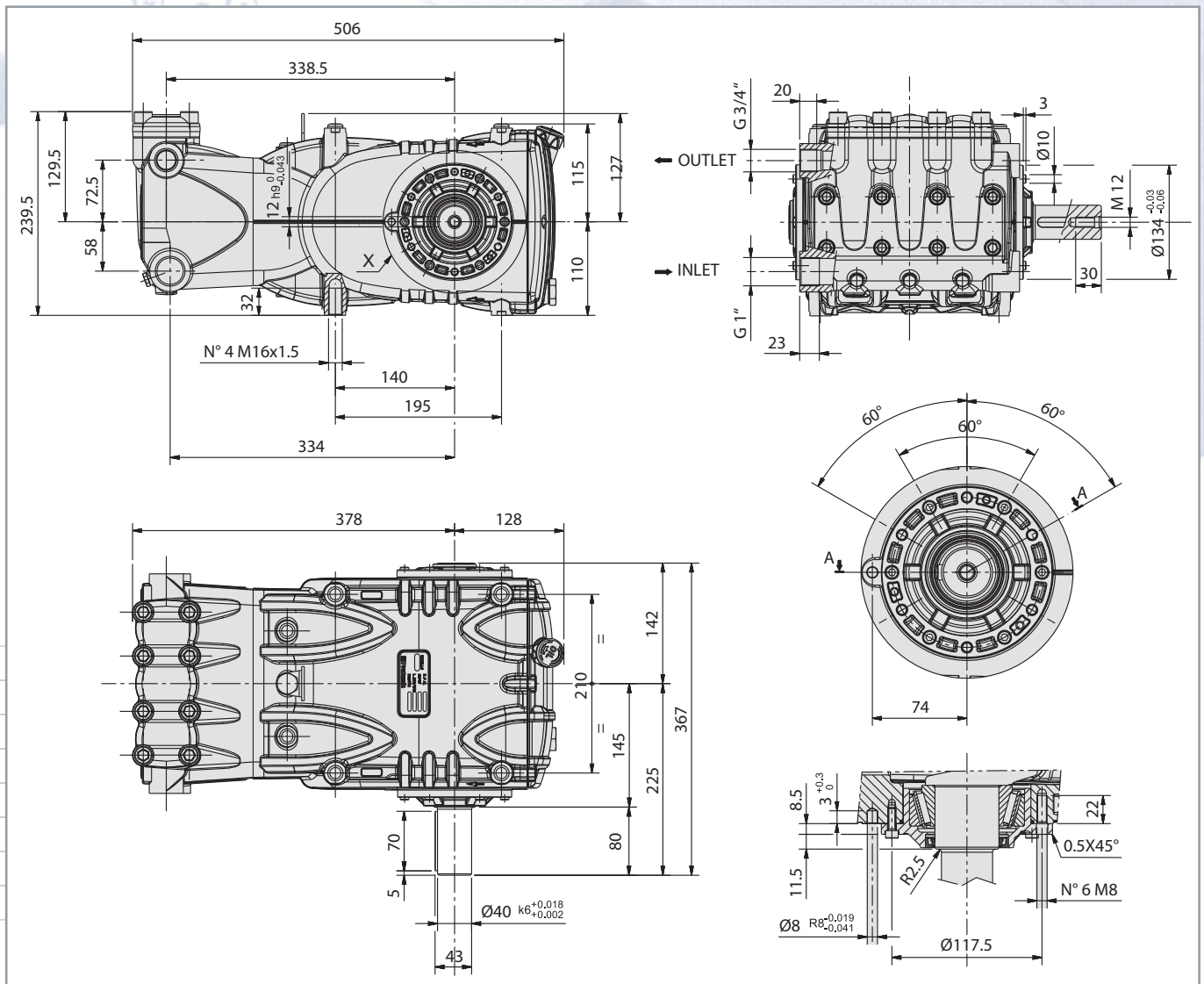
Presca di forza ausiliaria
Auxiliary P.T.O.



La coppia max è prelevabile anche con pompa a pieno carico (50 hp sulla presa primaria).
Max. torque is available also with pump at full load (50 hp at the primary shaft).

	Coppia max. Max torque (Nm)	Potenza max. Max power (Hp)	rpm
Cinghie - Pulley / belts	65	7,0	750
		7,4	800
		8,3	900
		9,3	1000
Giunto diretto - Flex joint direct	130	14,0	750
		14,8	800
		16,6	900
		18,6	1000

DIMENSIONI D'INGOMBRO - OVERALL DIMENSIONS



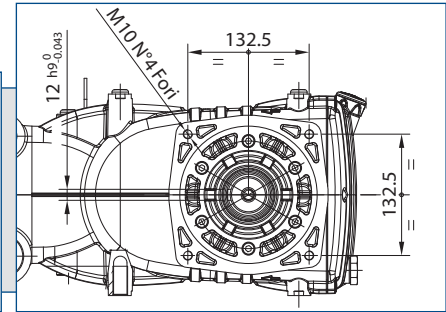
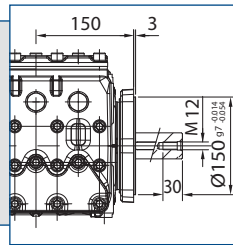
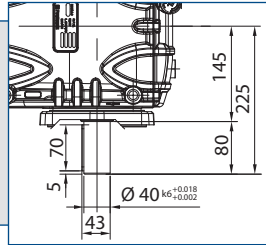
VF series 50HP



OPZIONI TRASMISSIONI - DRIVE OPTIONS

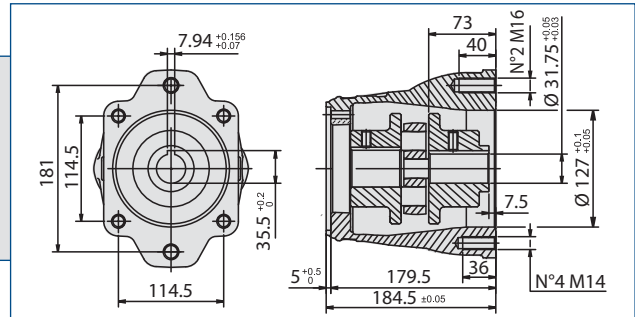
Flangia supporto per azionamenti diretti

Flange for direct drive mount



Kit campana e giunto per accoppiamento a motori idraulici SAE J 744 tipo C

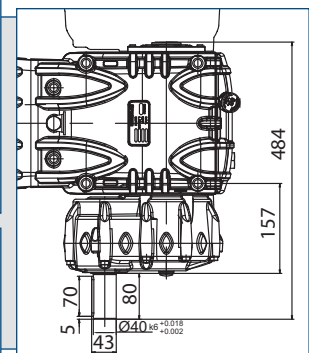
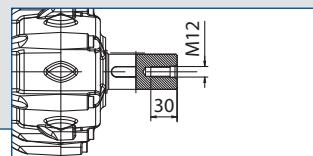
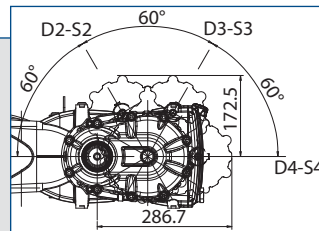
Bell housing and coupling for SAE J 744 C hydraulic motor



Riduttore / Gearbox

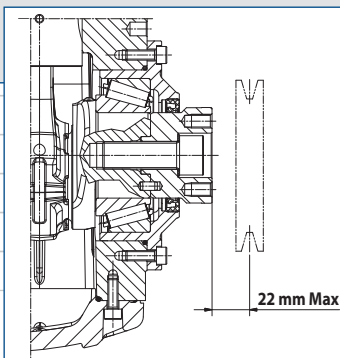
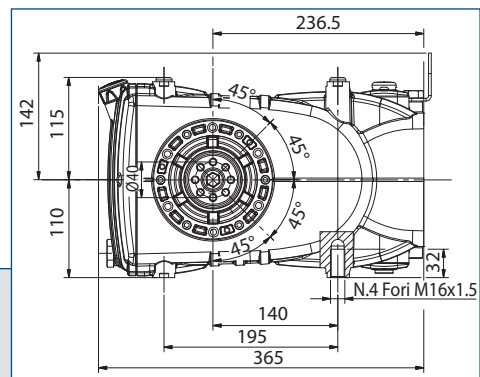
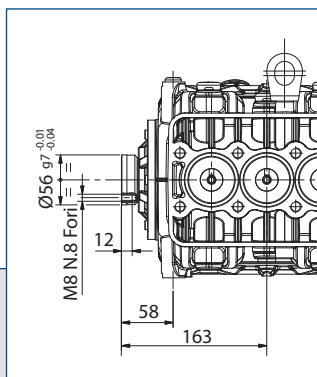
Le pompe VF sono disponibili su richiesta con riduttore di giri laterale. Il riduttore è disponibile in 3 rapporti ed installabile a dx o sx della pompa in 4 differenti posizioni. Rapporti di riduzione: R=1,25:1 - R=1,50:1 - R=1,83:1

VF pumps can be supplied with a optional gearbox available in 3 different ratios. The gearbox can be mounted on the left or right side of the pump in 4 different angles, at customer choice. Gearbox ratios: R=1,25:1 - R=1,50:1 - R=1,83:1



Presenza di forza ausiliaria

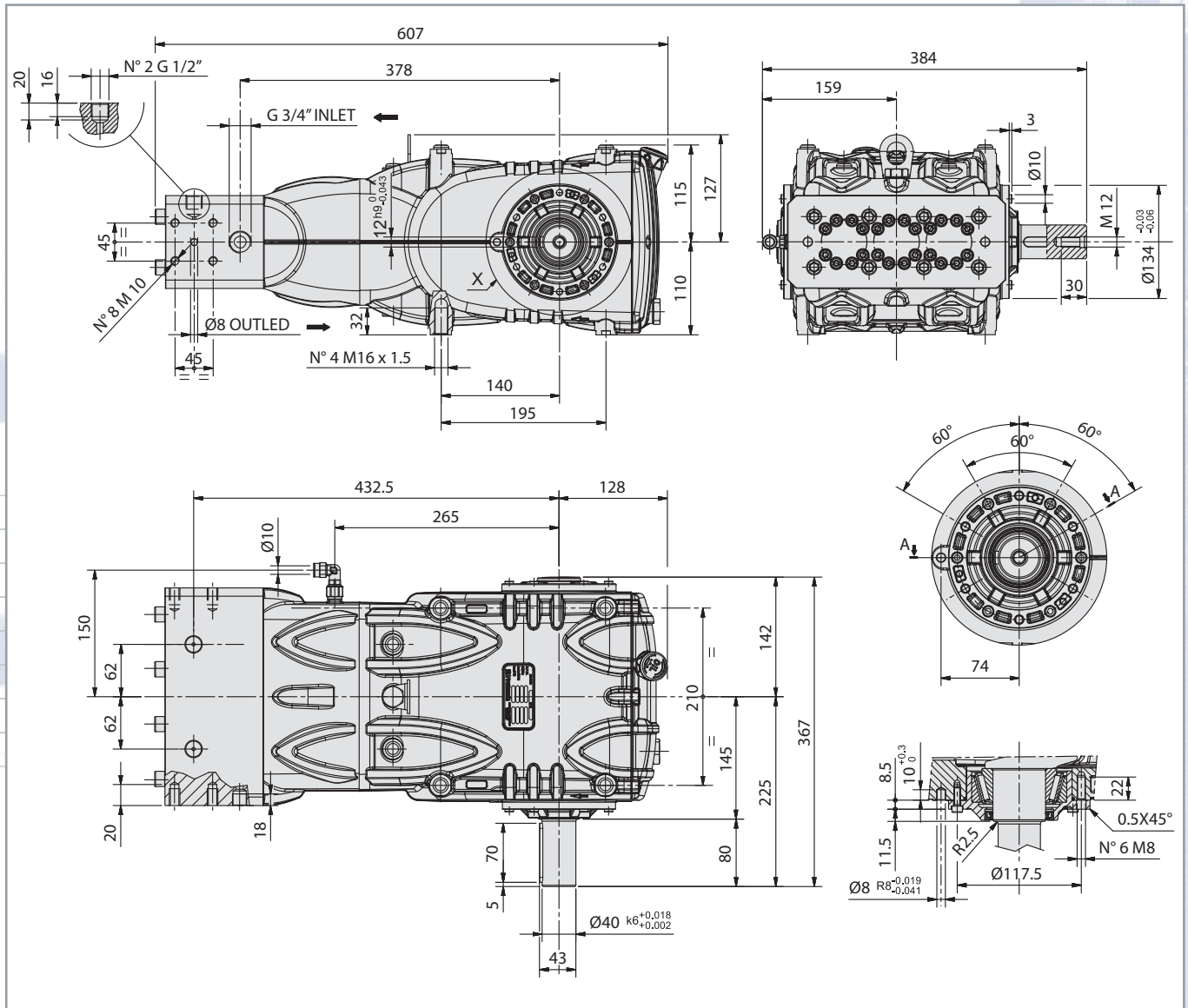
Auxiliary P.T.O.



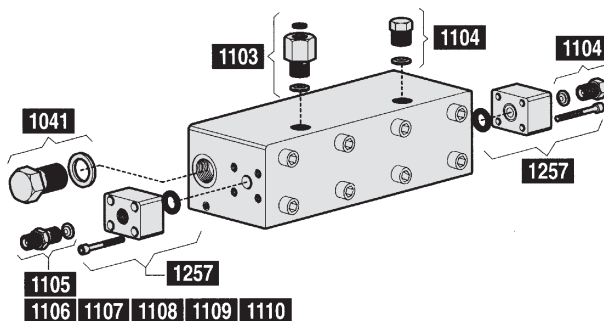
La coppia max è prelevabile anche con pompa a pieno carico (50 hp sulla presa primaria).
Max. torque is available also with pump at full load (50 hp at the primary shaft).

	Coppia max. Max torque (Nm)	Potenza max. Max power (Hp)	rpm
Cinghie - Pulley / belts	65	7,0	750
		7,4	800
		8,3	900
		9,3	1000
		Giunto diretto - Flex joint direct	130
14,8	800		
16,6	900		
18,6	1000		

DIMENSIONI D'INGOMBRO - OVERALL DIMENSIONS



KIT DI CONNESSIONE - CONNECTION KIT



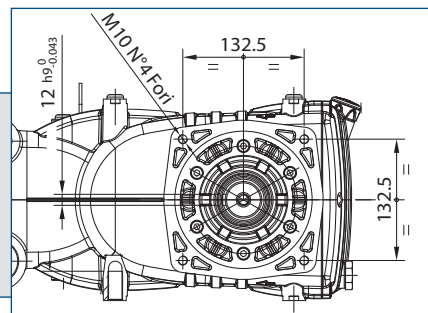
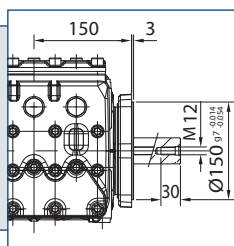
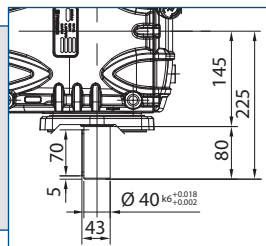
KIT 1041	INLET	G 3/4"
KIT 1103	OUTLET	G 1/2" HP - G 1/2"
KIT 1104	OUTLET	G 1/2" HP
KIT 1105	OUTLET	G 1/2" HP - G 1/4"
KIT 1106	OUTLET	G 1/2" HP - G 3/8"
KIT 1107	OUTLET	G 1/2" HP - M14x1,5
KIT 1108	OUTLET	G 1/2" HP - M20x1,5
KIT 1109	OUTLET	G 1/2" HP - M22x1,5
KIT 1110	OUTLET	G 1/2" HP - M24x1,5
KIT 1257	OUTLET	G 1/2" HP

VK series 75HP

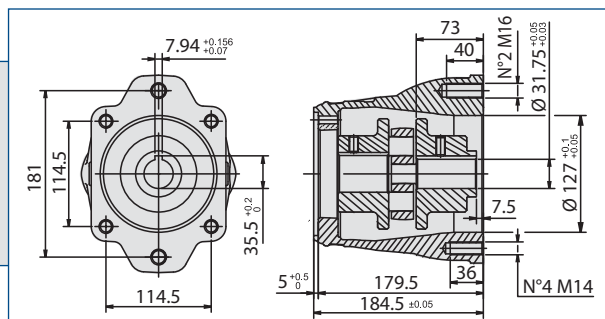


OPZIONI TRASMISSIONI - DRIVE OPTIONS

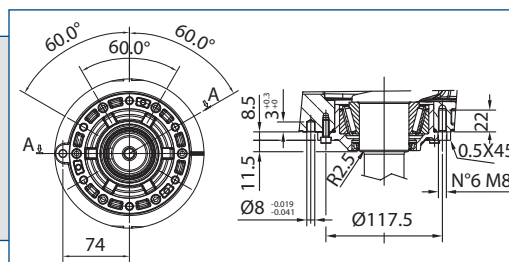
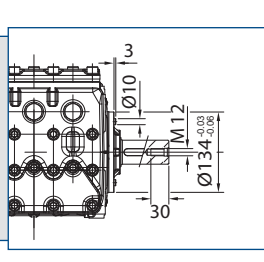
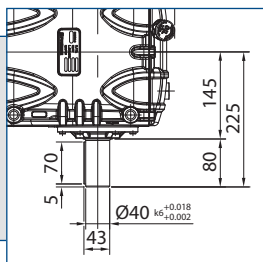
**Flangia supporto
per azionamenti diretti**
*Flange for direct
drive mount*



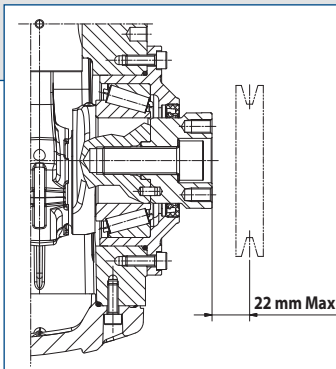
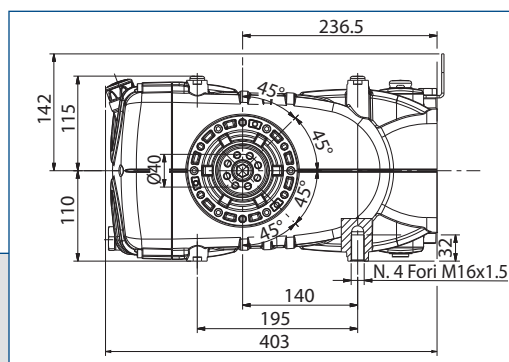
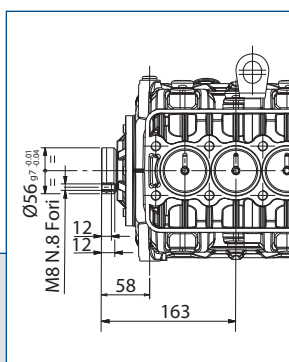
**Kit campana e giunto per accoppiamento
a motori idraulici SAE J 744 tipo C**
*Bell housing and coupling for
SAE J 744 C hydraulic motor*



**Presenza diretta
senza riduttore**
*Direct drive
without gearbox*



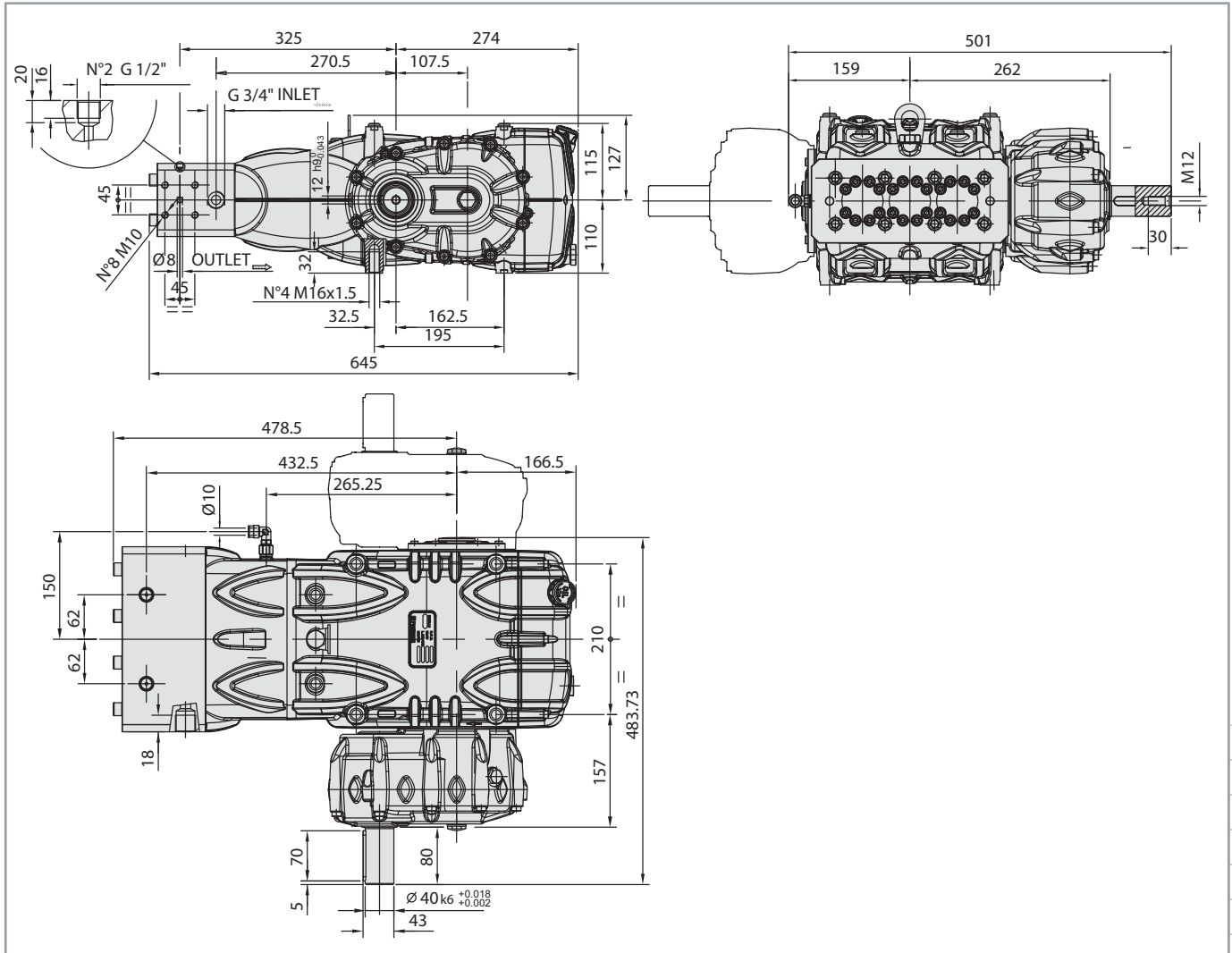
Presenza di forza ausiliaria
Auxiliary P.T.O.



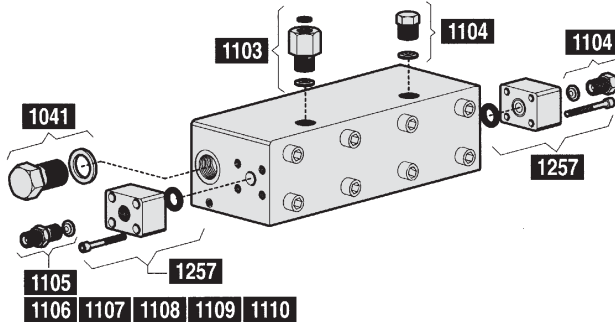
La coppia max è prelevabile anche con pompa a pieno carico (75 hp sulla presa primaria).
Max. torque is available also with pump at full load (75 hp at the primary shaft).

	Coppia max. Max torque (Nm)	Potenza max. Max power (Hp)	rpm
Cinghie - Pulley / belts	65	7,0	750
		7,4	800
		8,3	900
		9,3	1000
		11,1	1200
Giunto diretto - Flex joint direct	130	14,0	750
		14,8	800
		16,6	900
		18,6	1000
		22,2	1200

DIMENSIONI D'INGOMBRO - OVERALL DIMENSIONS



KIT DI CONNESSIONE - CONNECTION KIT



KIT 1041	INLET	G 3/4"
KIT 1103	OUTLET	G 1/2" HP - G 1/2"
KIT 1104	OUTLET	G 1/2" HP
KIT 1105	OUTLET	G 1/2" HP - G 1/4"
KIT 1106	OUTLET	G 1/2" HP - G 3/8"
KIT 1107	OUTLET	G 1/2" HP - M14x1,5
KIT 1108	OUTLET	G 1/2" HP - M20x1,5
KIT 1109	OUTLET	G 1/2" HP - M22x1,5
KIT 1110	OUTLET	G 1/2" HP - M24x1,5
KIT 1257	OUTLET	G 1/2" HP



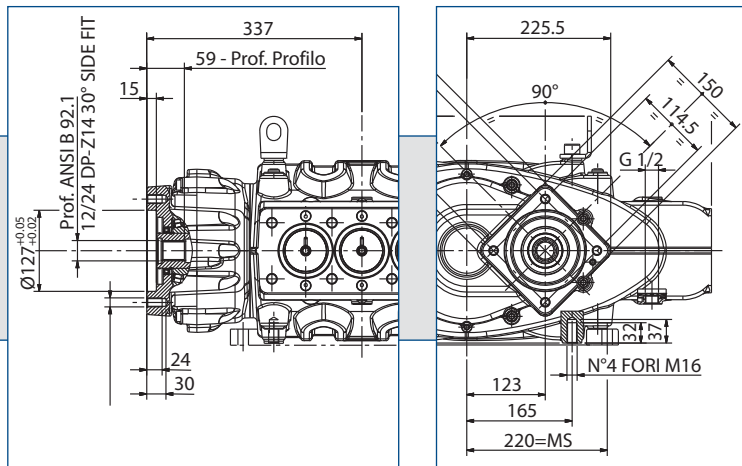
series
100HP



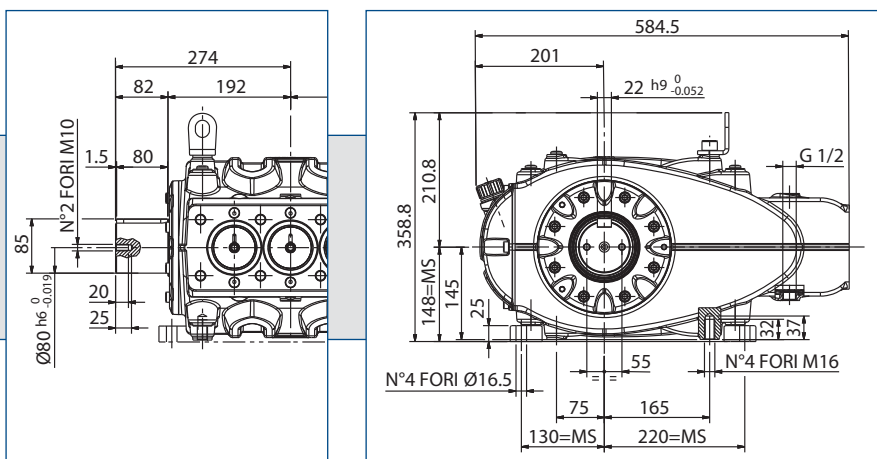
OPZIONI TRASMISSIONI - DRIVE OPTIONS

Versione per azionamento
con motore
idraulico SAE J 744 tipo C

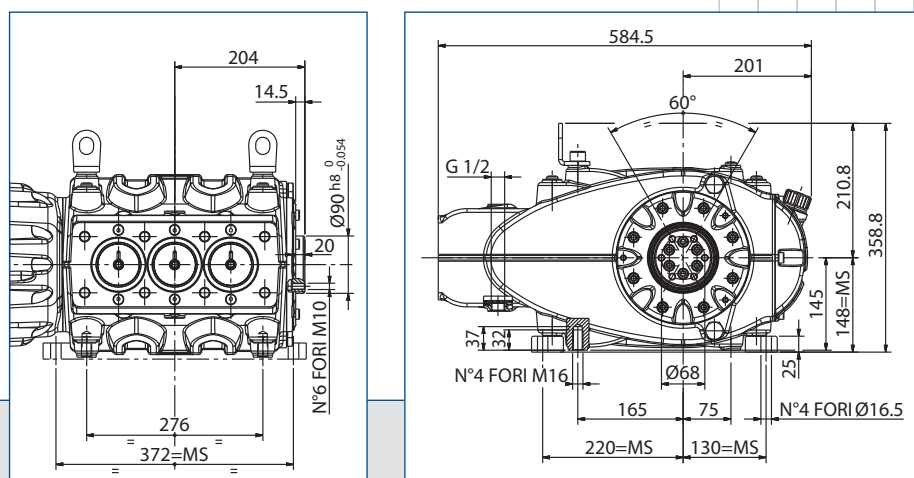
SAE J 744 C type
direct coupling



Presenza diretta senza riduttore
Direct drive without gearbox



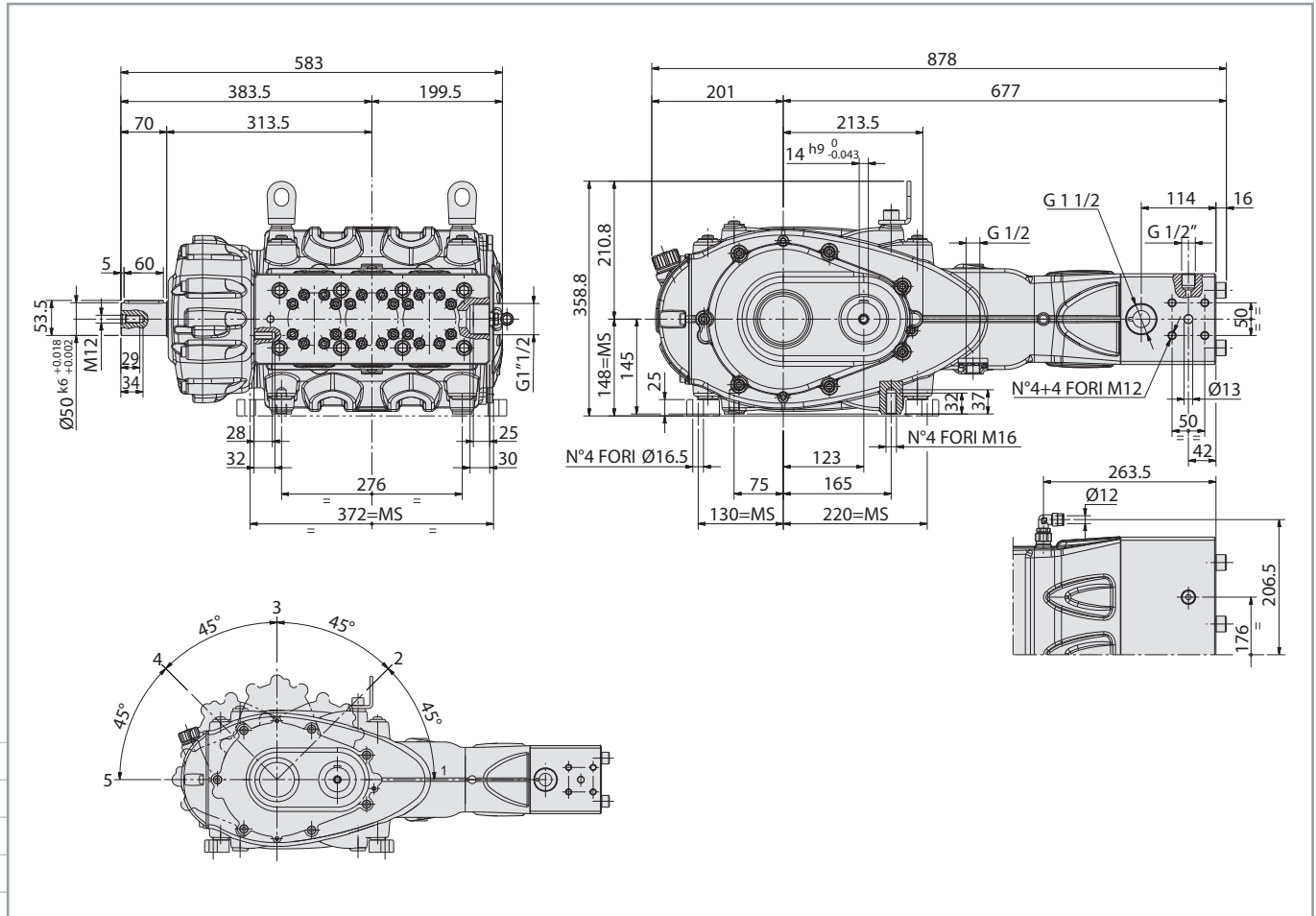
Presenza di forza ausiliaria
Auxiliary P.T.O.



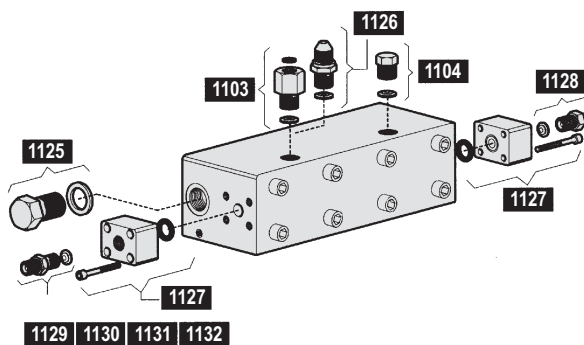
La coppia max è prelevabile anche con pompa a pieno carico (100 hp sulla presa primaria).
Max. torque is available also with pump at full load (100 hp at the primary shaft).

	Coppia max. Max torque (Nm)	Potenza max. Max power (Hp)	rpm
Cinghie - Pulley / belts	150	17,0	800
Giunto diretto - Flex joint direct	220	25,0	800

DIMENSIONI D'INGOMBRO - OVERALL DIMENSIONS



KIT DI CONNESSIONE - CONNECTION KIT

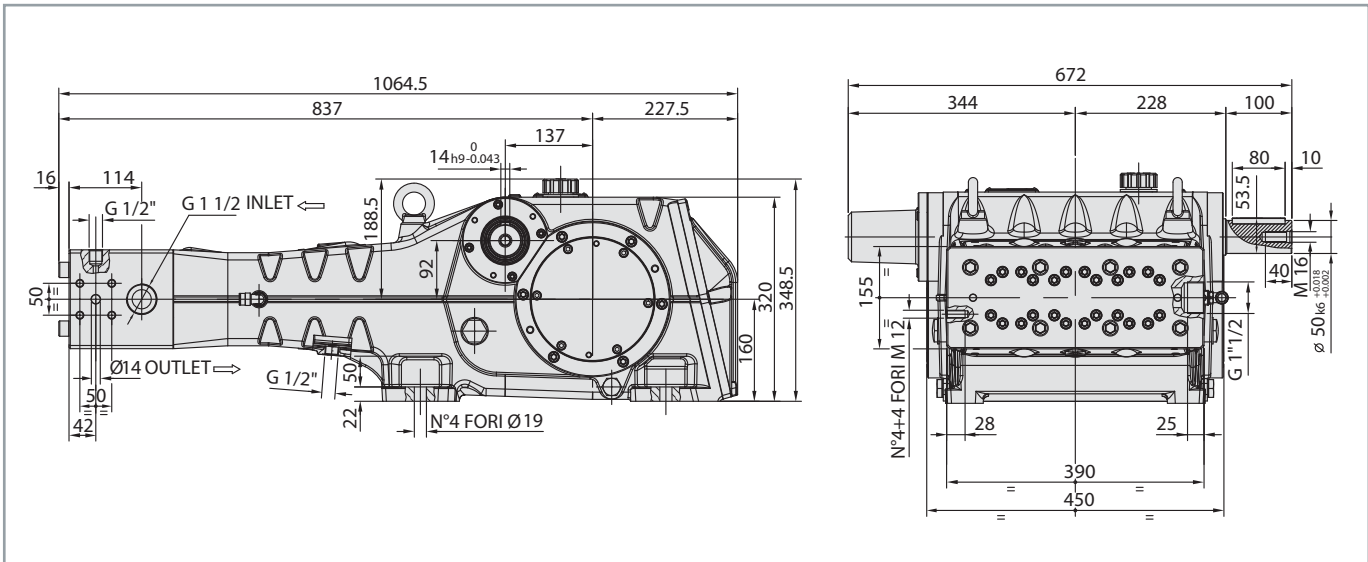


KIT 1103	OUTLET	G 1/2" HP - G 1/2"
KIT 1104	OUTLET	G 1/2" HP
KIT 1125	INLET	G 1"1/2
KIT 1126	OUTLET	G 1/2" HP - 5/8"UNF
KIT 1127	OUTLET	G 3/4" HP
KIT 1128	OUTLET	G 3/4" HP
KIT 1129	OUTLET	G 3/4" HP - G 3/8"
KIT 1130	OUTLET	G 3/4" HP - M20x1,5
KIT 1131	OUTLET	G 3/4" HP - M22x1,5
KIT 1132	OUTLET	G 3/4" HP - M24x1,5

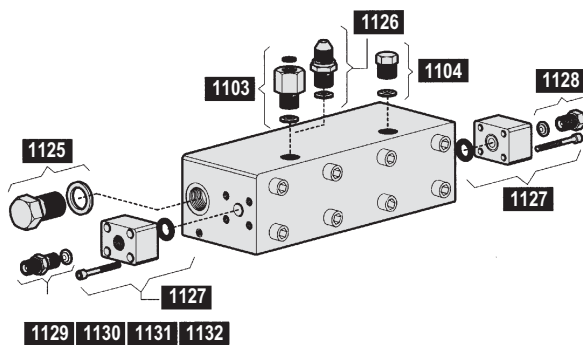
SK series 180HP



DIMENSIONI D'INGOMBRO - OVERALL DIMENSIONS



KIT DI CONNESSIONE - CONNECTION KIT



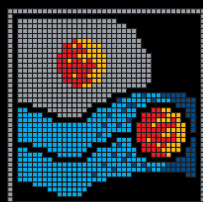
KIT 1103	OUTLET	G 1/2" HP - G 1/2"
KIT 1104	OUTLET	G 1/2" HP
KIT 1125	INLET	G 1 1/2
KIT 1126	OUTLET	G 1/2" HP - 5/8"UNF
KIT 1127	OUTLET	G 3/4" HP
KIT 1128	OUTLET	G 3/4" HP
KIT 1129	OUTLET	G 3/4" HP - G 3/8"
KIT 1130	OUTLET	G 3/4" HP - M20x1,5
KIT 1131	OUTLET	G 3/4" HP - M22x1,5
KIT 1132	OUTLET	G 3/4" HP - M24x1,5



I dati tecnici sono arrotondati per facilitarne la lettura.
The technical data are rounded for easy in readability.

I dati tecnici sono indicativi e possono essere modificati senza preavviso.
The technical data are indicatives and subjet to changes without notice.

Graphic lay-out: GI&VI - Reggio Emilia
Photolithography: La Fotolito Poviglio (R.E.)
Printed by: Arti Grafiche de Pietri Castelnovo di Sotto (R.E.)



A brand of



**INTERPUMP
GROUP**



Pratisoli

PRATISSOLI a brand of INTERPUMP GROUP S.P.A.

Via E. Fermi, 25 42049 S. Ilario (RE) Italy - Tel. +39 0522 904311 Fax +39 0522 904444

E-mail: info@pratissolipompe.com - <http://www.pratissolipompe.com>

INTERPUMP GROUP S.P.A.: C.C.I.A.A. R.E.A. N.204185

PART.IVA IT 01682900350 - REG.IMPRESSE R.E. - C.F.11666900151 - REG.A.E.E.: IT08020000000780